

Technical data sheet

Ethernet · Unmanaged E-CO Switch, 4+2 Port, 10/100 MBit/s

4 Fast Ethernet ports RJ-45, 2-100Base-FX SFP ports
Auto-negotiation for 10/100BASE-TX, auto MDI/MDI-X function
Redundant AC/DC supply, extended temperature range, ESD 6 kV



Identification

Type ET-SWU6F
Part No. [772024](#)

Product version

Datasheet version 00

Communication

Standard	IEEE 802.3 10BASE-T, IEEE 802.3u 100BASE-TX/100BASE-FX IEEE 802.3x flow control and back pressure IEC 60068-2-32 (free fall), IEC 60068-2-27 (shock), IEC 60068-2-6 (vibration)
LAN	10/100 Base-TX RJ45 auto-negotiation, auto-MDI/MDI-X
Cable length (segment)	Max. 100 m
Transfer rate	max. 10/100 Mbit/s
Connection technology (data)	4 × RJ45
Fiber Optic	2 × 100Base-FX
Transmission distance	Depending on SFP module
Transfer rate	100 Mbit/s
Mode	Multi-Mode: 50/125 µm fiber, 62.5/125 µm fiber Single-Mode: 9/125 µm fiber
Throughput (packet per second)	0.89 Mpps @ 64 bytes
Status display communication	System: Power 1 (P1): green Power 2 (P2): green Alarm, (Fault): green Per 10/100TX RJ45 Ports: 10/100 LNK/ACT: green Store-and-Forward

United Kingdom: LÜTZE Ltd.

Unit 3, Sandy Hill Park
Sandy Way, Amington • GB-Tamworth, Staffs B77 4DU
Tel. +44 (0)1827 31333-0 • Fax +44 (0)1827 31333-2
www.lutze.com • sales.gb@lutze.co.uk

Germany: Friedrich Lütze GmbH

Postfach 12 24 (PLZ 71366) • Bruckwiesenstraße 17-19 • D-71384 Weinstadt
Tel. +49 (0)7151 6053-0 • Fax +49 (0)7151 6053-277(-288)
www.luetze.de • info@luetze.de

28.02.2023 • Subject to technical modification

Part No. [772024](#) • Datasheet version: 00

page 1 of 5



SYSTEMATIC TECHNOLOGY

Technical data sheet

Ethernet · Unmanaged E-CO Switch, 4+2 Port, 10/100 MBit/s

	1 Mbit/s
Source Address Table	2K inputs, automatic source address learning and aging
FLOW Source	EEE 802.3x pause frame for full-duplex Back pressure for half-duplex
Switch Fabric	1,2 Gbps (non-blocking)

Safety

ESD (Ethernet)	DC 6 kV
Surge (EFT for power)	DC 6 kV
Reverse voltage protection	Yes

Monitoring

Error output	Relay, 1 NO contact - 1 A @ DC 24 V
Switching current	1 A @ DC 24 V
Switching voltage	AC 120 V / DC 28 V
Isolation voltage	DC 500 V

General

Rated voltage U_N	DC 12 – 48 V redundant, AC 24 V
Nominal voltage range	9 V – 52 V
Rated current	DC: max. 1.2 A, AC: max. 1.1 A
Degree of protection	IP30
Relative humidity (operation)	5 % – 90 % (non-condensing)
Relative humidity (storage)	0 % – 90 % (non-condensing)
Housing material	Metal
Mounting	DIN rail mountable TS35 (EN 60715) Wall mounting
Installation position	Any
Connection type	6-pole pluggable screw terminal for power supply and fault diagnosis single wire/fine wire 0.25 mm ² – 2.5 mm ² AWG 20 – AWG 14 fine stranded wire with ferrule 0.25 mm ² – 1.5 mm ² AWG 20 – AWG 16
MTBF	>100000 h
Dimensions (w × h × d)	32.0 mm × 135.0 mm × 87.8 mm
Weight/unit	0.442 kg
PU (units)	1

General ambient conditions

Operation temperature range	-40 °C ... +75 °C
Storage temperature range	-40 °C ... +85 °C

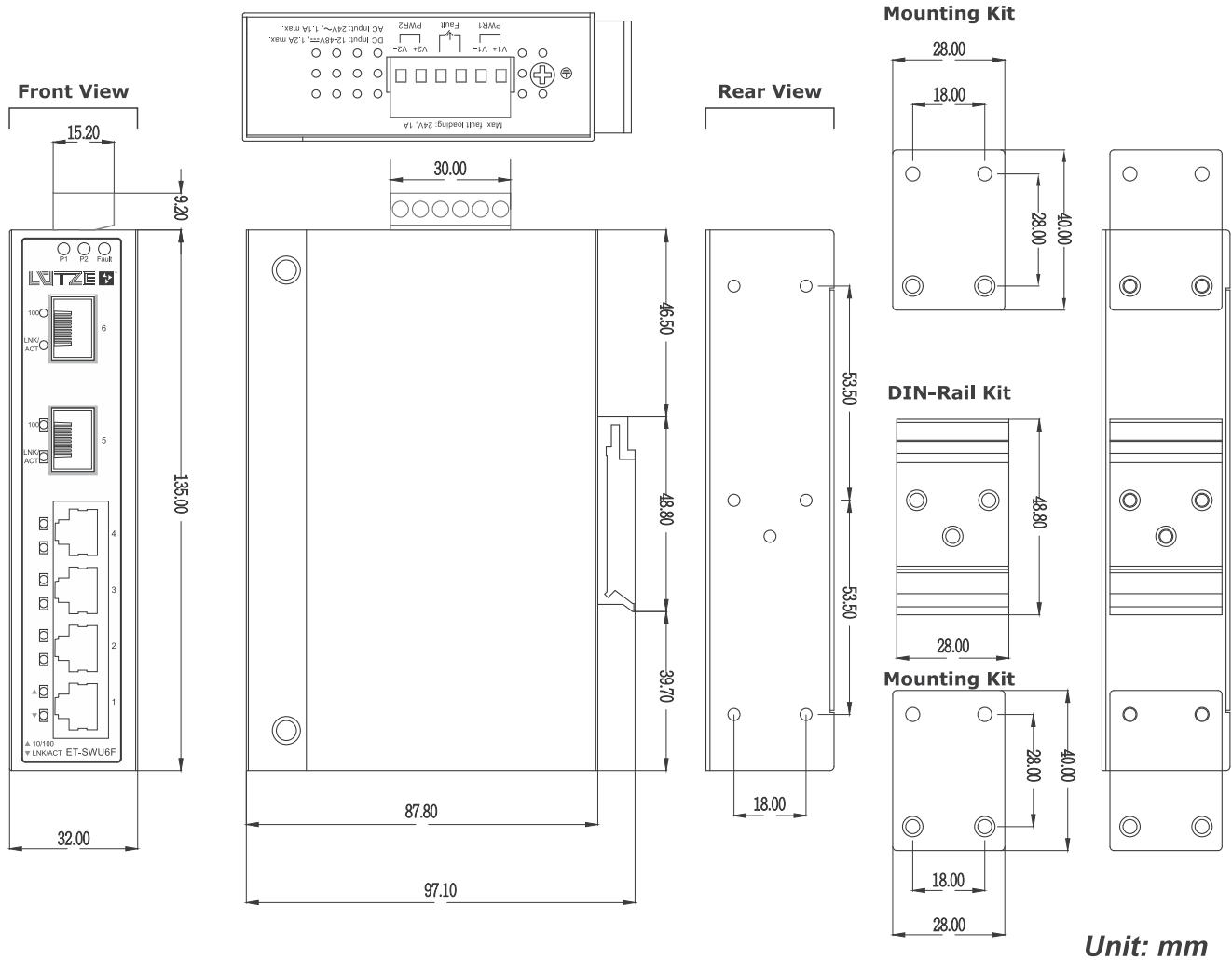
Technical data sheet

Ethernet · Unmanaged E-CO Switch, 4+2 Port, 10/100 MBit/s

Certifications/Standards

Certifications	CE FCC Part 15 Class A UKCA
Standards	EN 55032 EN 55035 IEC 61000-4-2/3/4/5/6/8 IEC 60068-2-27 IEC 60068-2-32 IEC 60068-2-6

Dimensions



Technical data sheet

Ethernet · Unmanaged E-CO Switch, 4+2 Port, 10/100 MBit/s

PIN assignment

⚠ VORSICHT Wenn Sie 24 V AC verwenden, verwenden Sie bitte nur Power 1 (PWR1).

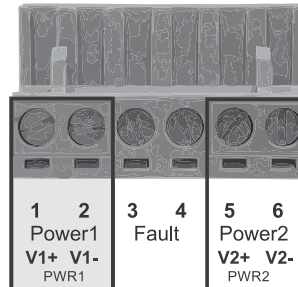
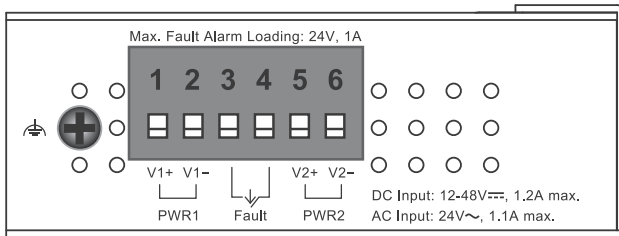
⚠ VORSICHT Der Fehlerkontakt ist im Normalbetrieb (Power 1 und Power 2) geschlossen, im Fehlerfall ist er offen.

⚠ CAUTION When using AC 24 V, please use only Power 1 (PWR1).

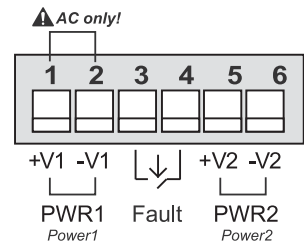
⚠ CAUTION The error contact is closed during normal operation (Power 1 and Power 2), in case of error it is open.

⚠ ATTENTION En cas d'utilisation de 24 V CA, veuillez utiliser uniquement la Power 1 (PWR1).

⚠ ATTENTION Le contact d'erreur est fermé en fonctionnement normal (Power 1 et Power 2), en cas d'erreur il est ouvert.

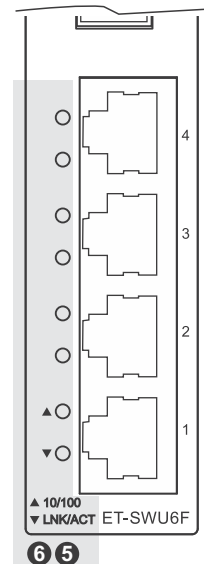
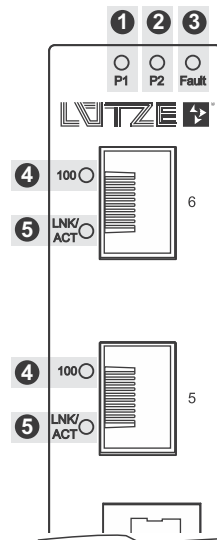


Max. fault loading: 24V, 1A



LED status

LED	Color	Function
1 P1	Green	● Lit: indicates power 1 has power.
2 P2	Green	● Lit: indicates power 2 has power.
3 Fault	Green	● Lit: indicates either power 1 or power 2 has no power.
4 100	Green	Fiber Optic ● Lit: indicates the fiber port is successfully connecting to the network at 100Mbps.
5 LNK/ACT	Green	Fiber Optic ● Lit: indicates the link through that port is successfully established.
		Copper * Blinking: indicates that the Switch is actively sending or receiving data over that port.
6 10/100	Green	Copper ● Lit: indicates the Switch is successfully connecting to the network at 100Mbps. ○ Off: indicates that the Switch is successfully connecting to the network at 10Mbps.



Technical data sheet

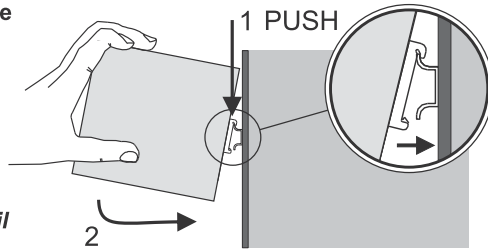
Ethernet · Unmanaged E-CO Switch, 4+2 Port, 10/100 MBit/s

Mounting diagram

DE 1. Montage auf Hutschiene

- Montage auf DIN –Tragschiene nach IEC 60715 TH35-7.5(-15).
- Einbaulage: vertikal

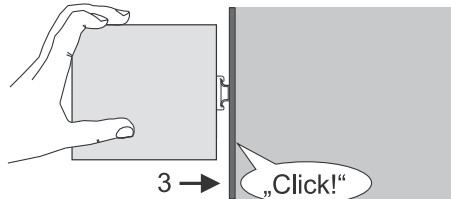
1. Kippen Sie das Gerät leicht nach hinten.
2. Hängen Sie das Gerät über die Oberkante der Schiene.
3. Schieben Sie es nach unten, bis es auf den Anschlag trifft.
4. Drücken Sie zum Verriegeln gegen die Unterseite. Bis Sie ein Klicken hören.



EN 1. Mounting on top hat rail

- Mounting on DIN hat rail according IEC 60715 TH35-7.5(-15).
- Installation position: vertical

1. Tilt the unit slightly backwards.
2. Fit the unit over the top edge of the rail.
3. Slide it downward until it hits the stop.
4. Press against the bottom to lock. Until you hear a click.



FR 1. Montage sur rail DIN

- Montage sur rail DIN selon IEC 60715 TH35-7.5(-15).
- Position de montage: verticale

1. Inclinez légèrement l'appareil vers l'arrière.
2. Installez l'appareil sur le bord supérieur du rail.
3. Faites-le glisser vers le bas jusqu'à ce qu'il atteigne la butée.
4. Appuyez contre le fond pour verrouiller. Jusqu'à ce que vous entendiez un dé clic.

DE Demontage

Die Demontage erfolgt in umgekehrter Reihenfolge.

EN Demounting

Dismounting is carried out in the reverse order.

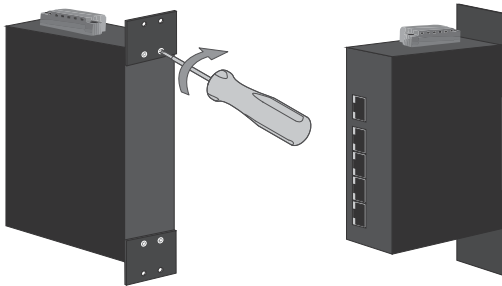
FR Démontage

Le démontage s'effectue dans l'ordre inverse.

DE 2. Wandmontage

EN 2. Wall mounting

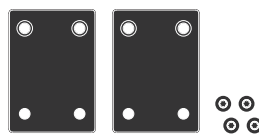
FR 2. Montage mural



DE Montageset

EN Mounting kit

FR Kit de montage



DE 3. Seitenmontage (Platz sparend)

EN 3. Side wall mounting (space saving)

FR 3. Montage latéral (gain de place)

