

Technical data sheet

IO-Link Gateway for LOCC-Box-Net · LOCC-Box-GWIO 7-6455

Gateway for LOCC-Box-Net versions

Input: LOCCbus (LIN)

Output: IO-Link



Identification

Type	LOCC-Box-GWIO 7-6455
Part No.	716455

Product version

Hardware revision	B
Software version	1.1
Datasheet version	05

Input

Bus system	LOCCbus, base LIN
Access method	Single-Master – Multiple Slave max. 15 functional assemblies
Bus technology	Line
Physical level	1-wire
Data rate	8 Bit + fixed parity (Bit 9)
Transfer protocol	Modified multi-drop
Reverse voltage protection	Yes

Output

Bus system	IO-Link
Transfer rate	38.4 kBaud
Interface	IO-Link Device

General

Rated voltage U_N	DC 12/24 V
---------------------	------------

United Kingdom: LÜTZE Ltd.

Unit 3, Sandy Hill Park
Sandy Way, Amington · GB-Tamworth, Staffs B77 4DU
Tel. +44 (0)1827 31333-0 · Fax +44 (0)1827 31333-2
www.lutze.com · sales.gb@lutze.co.uk

Germany: Friedrich Lütze GmbH

Postfach 12 24 (PLZ 71366) · Bruckwiesenstraße 17-19 · D-71384 Weinstadt
Tel. +49 (0)7151 6053-0 · Fax +49 (0)7151 6053-277(-288)
www.luetze.de · info@luetze.de

07.12.2023 · Subject to technical modification

Part No. [716455](#) · Datasheet version: 05

page 1 of 6



SYSTEMATIC TECHNOLOGY

Technical data sheet

IO-Link Gateway for LOCC-Box-Net · LOCC-Box-GWIO 7-6455

Operation voltage range	DC 10–30 V
Rated current	80 mA @ 24 V
Dimensions (w × h × d)	8.1 mm × 107.4 mm × 116.0 mm
Housing material	PA 6.6 (UL 94 V-0, NFF I2, F2)
Mounting	DIN rail mountable TS35 (EN 60715)
Installation position	Any
Degree of protection	IP20 (only as complete system with power terminal and end block)
Connection type	Push-In spring connection 0.25 mm ² – 2.5 mm ² AWG 24 – AWG 14
Weight/unit	0.105 kg
PU (units)	1

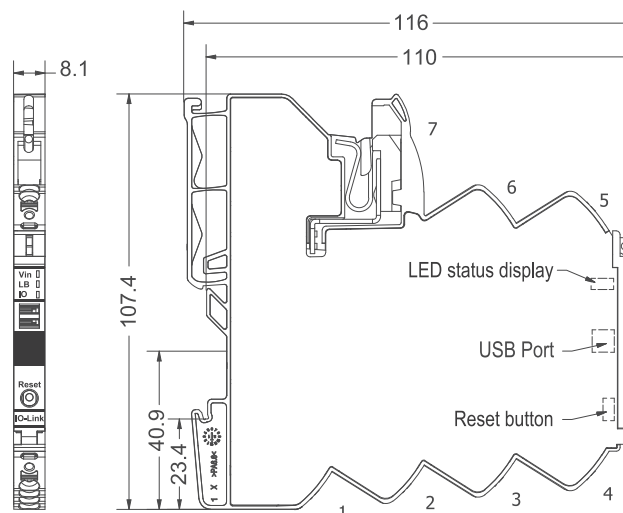
General ambient conditions

Operation temperature range	-25 °C ... +50 °C
Storage temperature range	-40 °C ... +85 °C
Relative air humidity	max. 90 % not condensing
Vibration resistance	1 g acc. to EN 60068-2-6
Shock resistance	15 g acc. EN 60068-2-27

Certifications/Standards

Conformity	CE UKCA FCC
Certifications	cULus (E170585)
Standards	EN 61000-6-2 EN 61000-6-4 EN 61010-1 EN IEC 61010-2-201 UL 61010-1 UL 61010-2-201 CFR 47 Part 15 Subpart B

Dimensions



Technical data sheet

IO-Link Gateway for LOCC-Box-Net · LOCC-Box-GWIO 7-6455

PIN assignment



PIN Signal

PIN	Signal
1	IO Link (L-)
2	IO Link (C/Q)
3	IO Link (L+)
4	Communication (LIN)
5	0V GND
6	DC + 24V
7	DC + 24V

Use

DE Installation EN Installation FR Installation

DE 1. Standard Anwendung mit Stromschiene

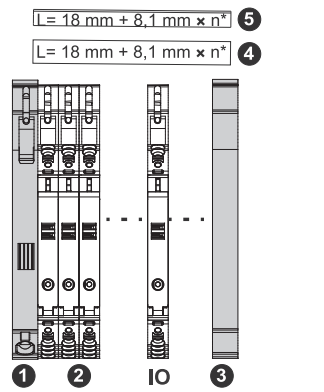
- 1 Einspeiseklemme aus Set 716425/716447
- 2 Überwachungsbaustein – LOCC-Box
- 3 Endblock aus Set 716425/716447
- 4 Kupferschiene 1 m (716426)
- 5 Kupferschienen konfektioniert (716426.xxx.x)
- 6 Abdeckung Kupferschiene (716427)

EN 1. Standard application with power rail

- 1 Supply terminal from set 716425/716447
- 2 Monitoring Module – LOCC-Box
- 3 End terminal from set 716425/716447
- 4 Copper rail 1 m (716426)
- 5 Copper bus bars tailored (716426.xxx.x)
- 6 Cover copper rail (716427)

FR 1. Application standard avec rail d'alimentation

- 1 La borne de raccordement au réseau se trouve dans le kit 716425/716447
- 2 Convertisseur de mesure – LOCC-Box
- 3 Borne d'extrémité est inclus dans le kit 716425/716447
- 4 Barre de cuivre (716426)
- 5 Barres bus en cuivre sur mesure (716426.xxx.x)
- 6 Recouvrement pour rail cuivre (716427)



DE 2. Stand-alone Anwendung

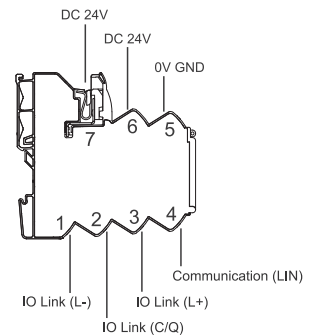
Das LOCC-Box I/O-Link-Gateway kann auch als eigenständiges Gerät verwendet werden.

EN 2. Stand alone application

The LOCC-Box I/O link gateway can also be used as a stand-alone device.

FR 2. Application standard

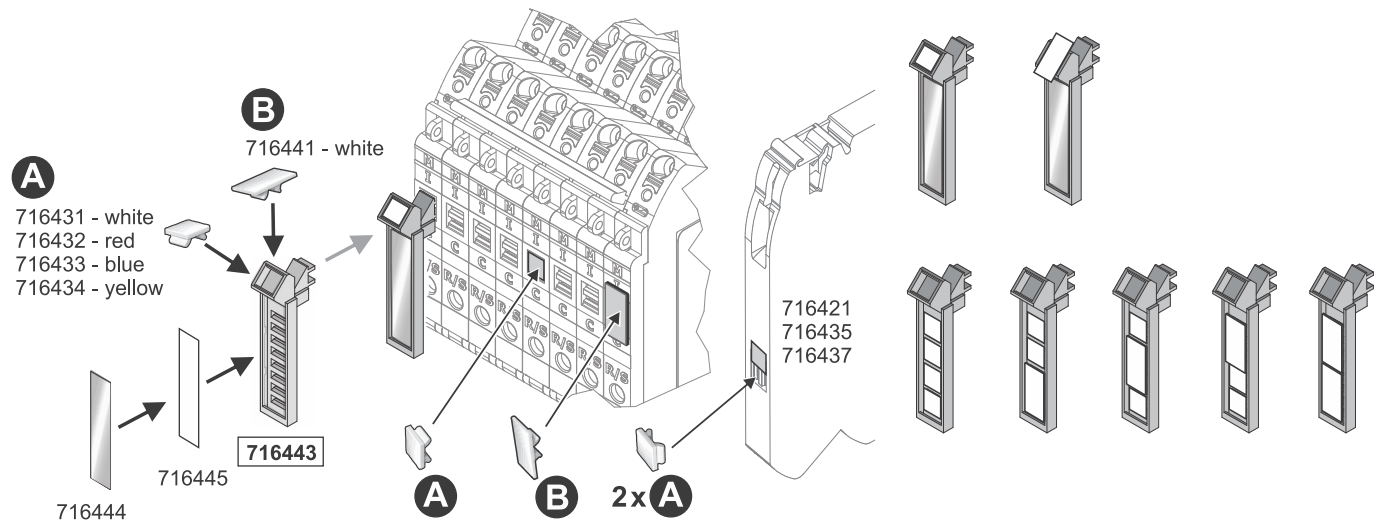
La passerelle de liaison E/S LOCC-Box peut également être utilisée en tant que dispositif autonome.



Technical data sheet

IO-Link Gateway for LOCC-Box-Net · LOCC-Box-GWIO 7-6455

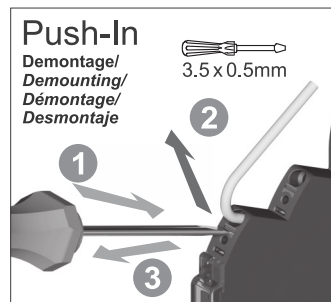
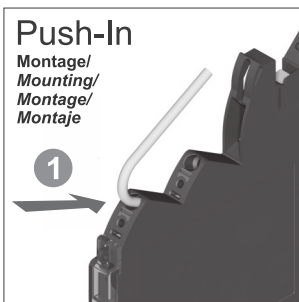
Use




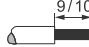
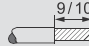
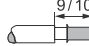
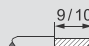
Mounting diagram

DE Verdrahtung EN Wiring FR Câblé ES Cableado

HINWEIS / NOTICE / AVIS / AVISO



Standard-Werte / Standard values / Valeur standard / Valores estándar

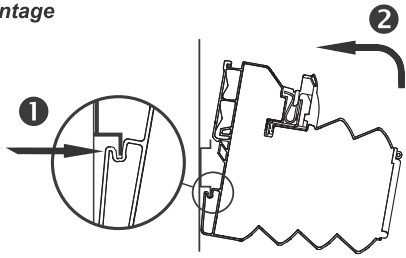
Abisolierlänge/ Stripping Length/ Longueur du dénudage/ Longitud de desaislado	Querschnitt/ Cross section/ Section/ Sección transversal	 3.5 x 0.5mm
	0.25 ... 2.5 mm ² , AWG 24 – 14	
	0.25 ... 2.5 mm ² , AWG 24 – 14	
	0.25 ... 2.5 mm ² , AWG 24 – 14	
UL Werte / UL values / Valeur UL / Valores UL		
	0.25 ... 2.5 mm ² , AWG 24 – 14 Material cable: Cu, Temperature range (operation): -25°C ≤ Tamb ≤ +70°C	

Technical data sheet

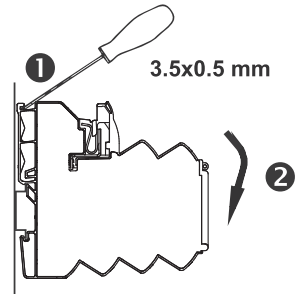
IO-Link Gateway for LOCC-Box-Net · LOCC-Box-GWIO 7-6455

Mounting diagram

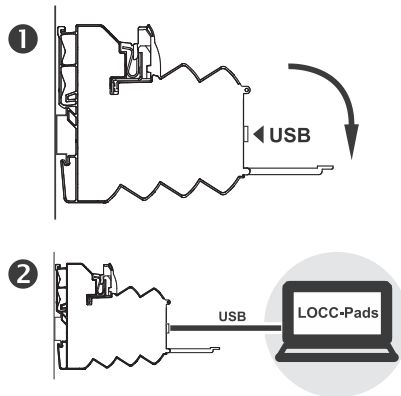
DE Montage
EN Mounting
FR Montage



DE Demontage
EN Dismounting
FR Démontage



DE Konfiguration
EN Configuration
FR Configuration



DE



LOCC-Pads

Die kostenlose *LOCC-Pads* Software finden Sie im Downloadbereich von www.luetze.de

EN



LOCC-Pads

The free *LOCC-Pads* software can be found in the download area of www.luetze.com

FR



LOCC-Pads

Le logiciel gratuit *LOCC-Pads* se trouve dans la zone de téléchargement de : www.luetze.fr

Technical data sheet

IO-Link Gateway for LOCC-Box-Net · LOCC-Box-GWIO 7-6455

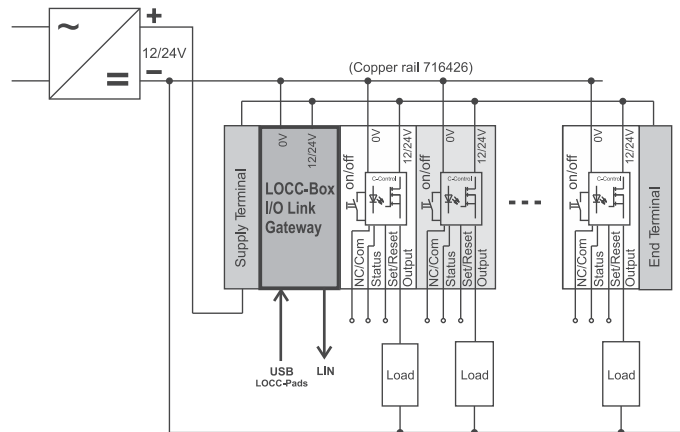
Circuit diagram

DE Prinzipschaltbild EN *Block diagram*

FR Schéma de principe

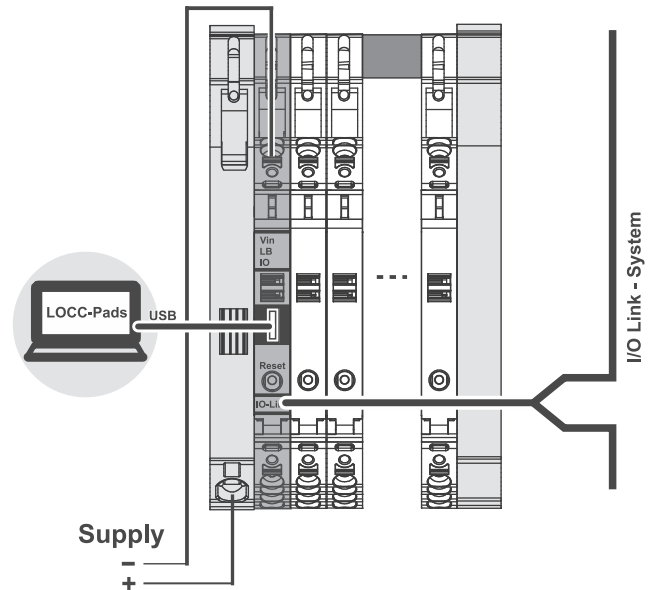
DE 1. LOCC-Boxen System mit Einspeiseset
 EN 1. LOCC boxes system with power supply set
 FR 1. Système de boîtes LOCC avec set d'alimentation

Power supply



DE Anwendungsbeispiel EN *Application example*

FR Exemple d'application



DE 2. LOCC-Boxen System mit Direkteinspeisung

EN 2. LOCC boxes system with direct feeding

FR 2. Système de boîtes LOCC avec alimentation directe

Power supply

