

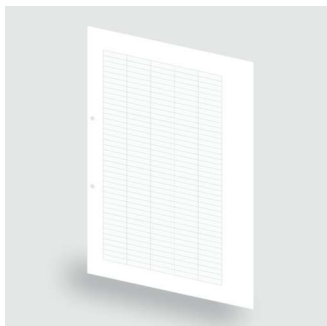
Technical data sheet

Load monitoring · LOCC-Box Accessories

Labelling system

Insert, 30 x 6 x 0.3 mm

240 labels



Identification

Type LOCC-Box-LEB 7-6445

Part No. [716445](#)

Product version

Datasheet version 02

Description

Description Insertable labels made of paper for labeling terminals, suitable for group label holder (716443), color white

General

Accessories	Material name
Design	DIN A 4 sheets with 240 single labels
Material	Paper
Color	white
Flamability according to UL 94	HB
Dimensions (L×H×T)	30,0 × 6,0 × 0,3 mm
MTBF	690000 h
Weight/unit	0.0105 kg
PU (units)	10

General ambient conditions

Operation temperature range -25 °C ... +70 °C

Storage temperature range -40 °C ... +80 °C

United Kingdom: LÜTZE Ltd.

Unit 3, Sandy Hill Park
Sandy Way, Amington • GB-Tamworth, Staffs B77 4DU
Tel. +44 (0)1827 31333-0 • Fax +44 (0)1827 31333-2
www.lutze.com • sales.gb@lutze.co.uk

Germany: Friedrich Lütze GmbH

Postfach 12 24 (PLZ 71366) • Bruckwiesenstraße 17-19 • D-71384 Weinstadt
Tel. +49 (0)7151 6053-0 • Fax +49 (0)7151 6053-277(-288)
www.luetze.de • info@luetze.de

17.04.2023 • Subject to technical modification

Part No. [716445](#) • Datasheet version: 02

page 1 of 3



SYSTEMATIC TECHNOLOGY

Technical data sheet

Load monitoring · LOCC-Box Accessories

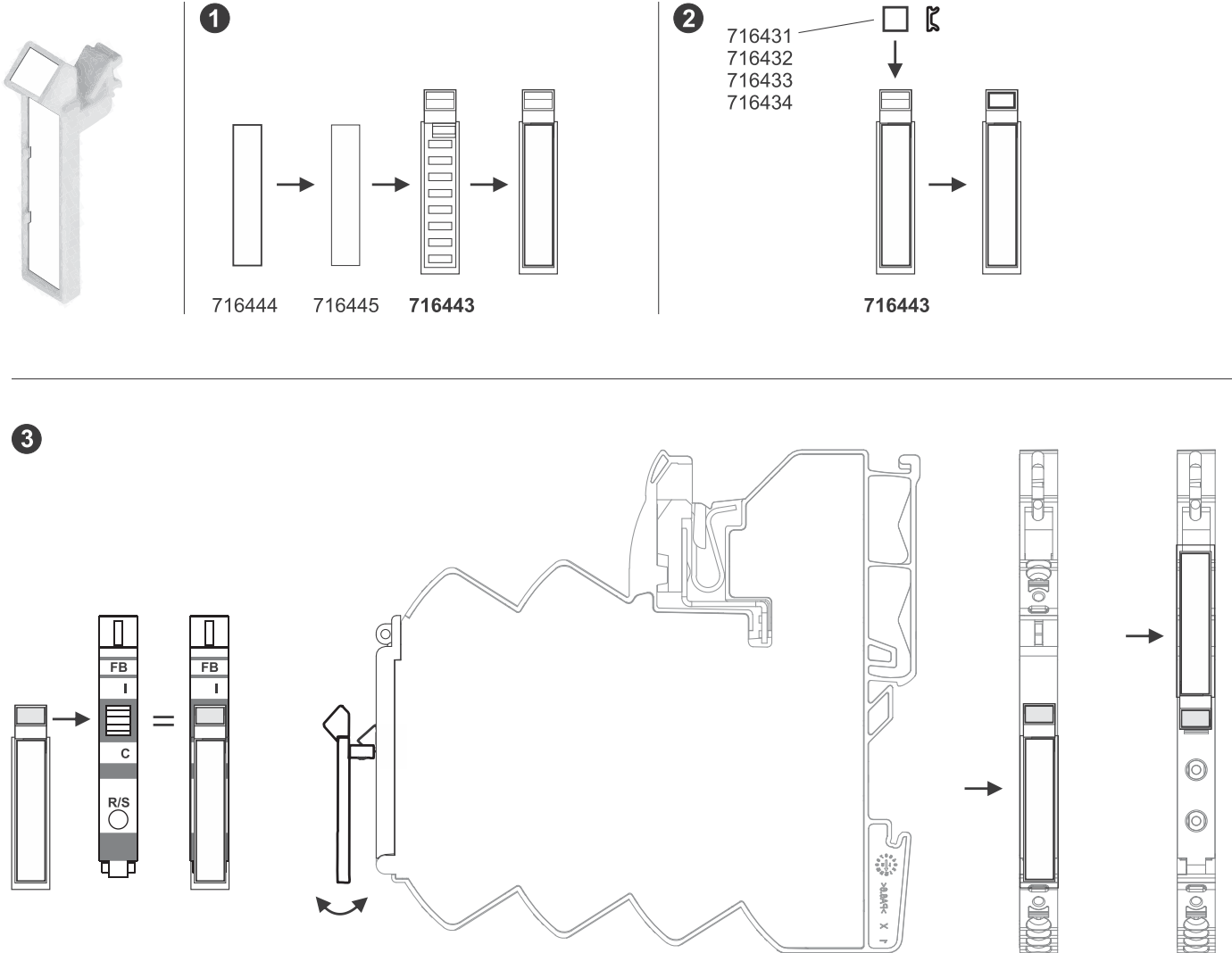
Vibration resistance 0.7 g acc. to EN 60068-2-6

Shock resistance 15 g acc. EN 60068-2-27

Certifications/Standards

Conformity Standards RoHS
EN 60947-1

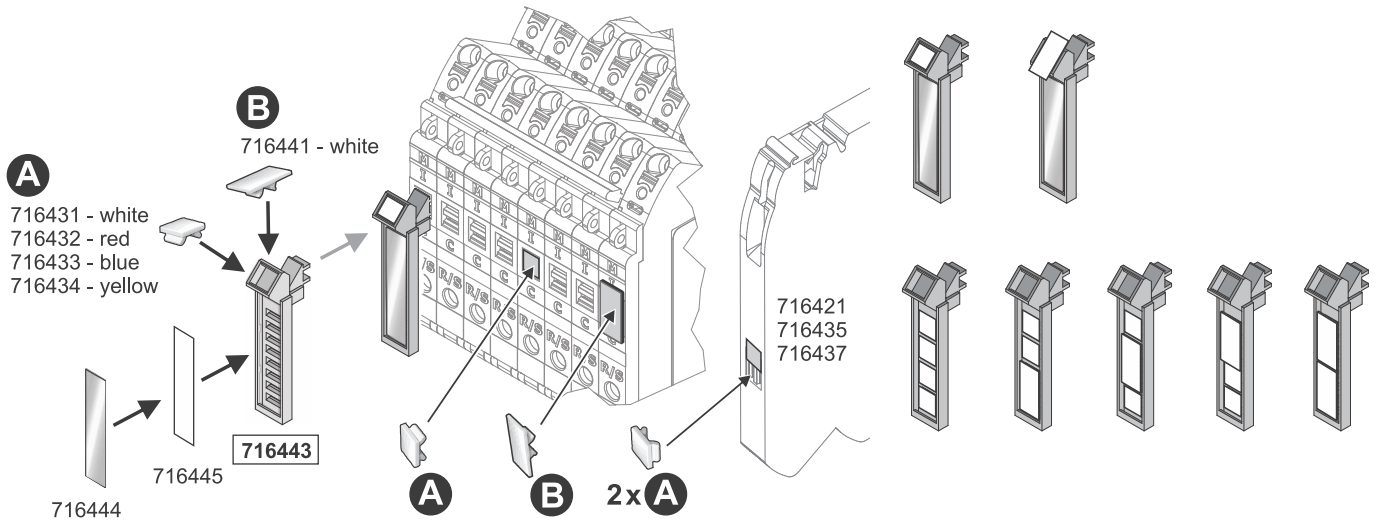
Use



Technical data sheet

Load monitoring · LOCC-Box Accessories

Use



Use

