

## Technical data sheet

### Suppression Technology · Valve Suppressors

---

#### Plug adapter for valve suppressors type A (18mm)

Protection device + LED

Mounting, plug seal not applicable



---

#### Identification

Type LRC-V8-0857 AC 230V  
Part No. [700857](#)

---

#### Product version

Datasheet version 00

---

#### Technical data

Type of function Plug adapter  
Protection device RC module + glow lamp  
Rated voltage  $U_N$  AC 230 V  
Cut-off peak  $\leq 300$  V  
Rated frequency  $f_N$  50 Hz / 60 Hz  
Holding Capacity 10 VA

---

#### General

Design V8 (A 18 mm)  
Status indication Glow lamp yellow  
Pole number 2  
Housing material PA  
Color of the housing black  
Degree of pollution 3  
Degree of protection IP65  
Mounting plug-in  
Plug seal not applicable  
Connection type Male contacts

---

#### United Kingdom: LÜTZE Ltd.

Unit 3, Sandy Hill Park  
Sandy Way, Amington • GB-Tamworth, Staffs B77 4DU  
Tel. +44 (0)1827 31333-0 • Fax +44 (0)1827 31333-2  
www.lutze.com • sales.gb@lutze.co.uk

#### Germany: Friedrich Lütze GmbH

Postfach 12 24 (PLZ 71366) • Bruckwiesenstraße 17-19 • D-71384 Weinstadt  
Tel. +49 (0)7151 6053-0 • Fax +49 (0)7151 6053-277(-288)  
www.luetze.de • info@luetze.de

04.05.2022 • Subject to technical modification

Part No. [700857](#) • Datasheet version: 00

page 1 of 2



SYSTEMATIC TECHNOLOGY

## Technical data sheet

### Suppression Technology · Valve Suppressors

---

Operation temperature range	-20 °C ... +60 °C
Storage temperature range	-25 °C ... +80 °C
Dimensions (w × h × d)	29.5 mm × 41.5 mm × 45.0 mm
Weight/unit	0.01 kg
PU (units)	10

---

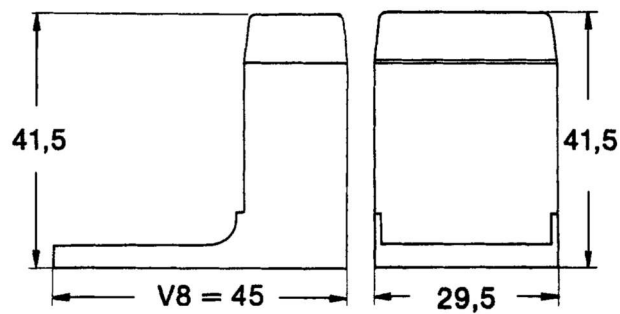
### Certifications/Standards

---

Standards	EN 175301-803 ISO 4400
-----------	---------------------------

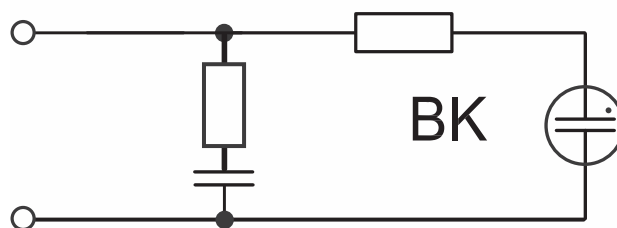
---

### Dimensions



### PIN assignment

RC element + glow lamp



### Contact arrangement

