

Technical data sheet

Actuator sensor interface · RJ45 Panel pass through devices

Control cabinet bushing M12 - RJ45

Female/female 1:1

Cat 5e (Ethernet, Profinet)



Identification

Type M12-RJ45 F/F 90° 4/4 Cat.5e Profinet
Part No. [490105](#)

Product version

Datasheet version 00

General

Design	RJ45/M 12×1
Form male 1	RJ45 M 12 female
Insulation resistance	>100 MΩ
Contact resistance	<30 mΩ
Flamability according to UL 94	V0
Degree of protection	IP67
Housing material	PA
Contact material	Phosphor Bronze, gold-plated
Mounting	Rear wall assembly Fastening thread M16 × 1,5
Installation depth	approx.70 mm
Operation temperature range	-25 °C ... +85 °C
Storage temperature range	-25 °C ... +85 °C
Temperature range connector	-25 °C ... +85 °C
Dimensions (Ø×d)	29.5 × 29 mm
Mechanical service life	>750 insertion cycles
Weight/unit	0.037 kg
PU (units)	1

United Kingdom: LÜTZE Ltd.

Unit 3, Sandy Hill Park
Sandy Way, Amington · GB-Tamworth, Staffs B77 4DU
Tel. +44 (0)1827 31333-0 · Fax +44 (0)1827 31333-2
www.lutze.com · sales.gb@lutze.co.uk

Germany: Friedrich Lütze GmbH

Postfach 12 24 (PLZ 71366) · Bruckwiesenstraße 17-19 · D-71384 Weinstadt
Tel. +49 (0)7151 6053-0 · Fax +49 (0)7151 6053-277(-288)
www.luetze.de · info@luetze.de

03.05.2022 · Subject to technical modification

Part No. [490105](#) · Datasheet version: 00

page 1 of 3



SYSTEMATIC TECHNOLOGY

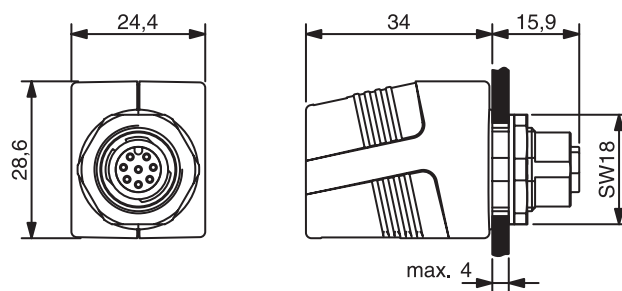
Technical data sheet

Actuator sensor interface · RJ45 Panel pass through devices

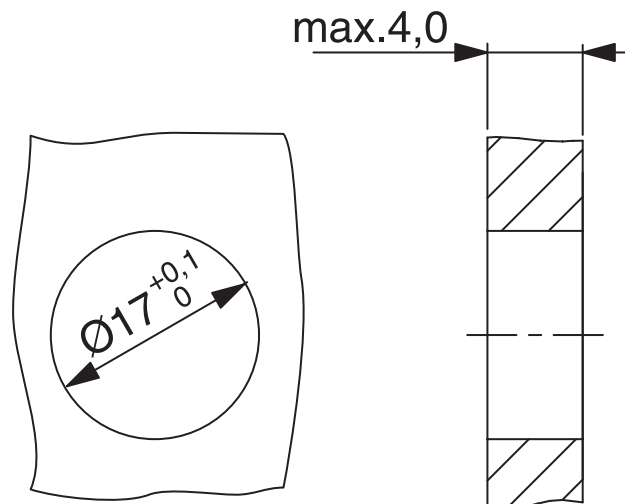
Technical data

Rated voltage U_N	24 V
Operating voltage max.	50 V
Rated current	1 A per contact
Pole number	4
Bandwidth	100 MHz
Transfer rate	1 Gbit/s
Category	Cat.5e
Contact type	1 : 1
Coding	D
Shielding	360°

Dimensions



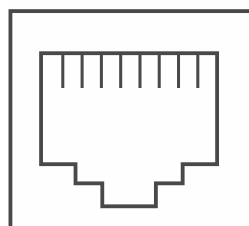
Mounting diagram



Pin layout

RJ45 female

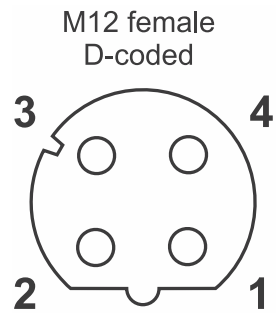
1 2 3 4 5 6 7 8



Technical data sheet

Actuator sensor interface · RJ45 Panel pass through devices

Pin layout



Circuit diagram

