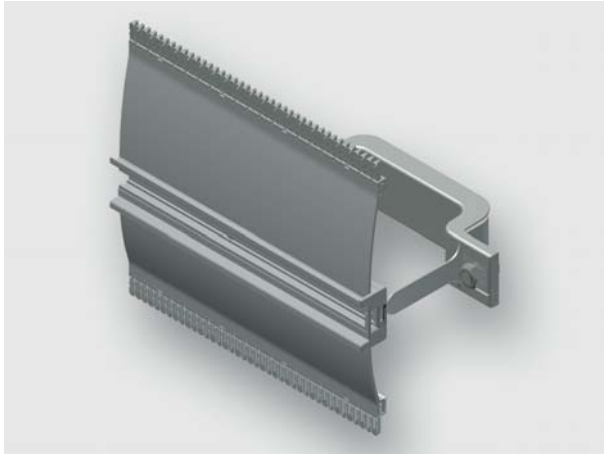


Technical data sheet - Module AirSTREAM



Standard module, pre-assembled from rail type HA and mounting bracket

Identification	Type	HA160 0700-0700 BI30-085
	Part-No.	380141M0005

Description	
Module type	HA160
Description	Hat profiles rails asymmetrical HA module: The standard module HA is used for mounting of components where DIN rail mountings are not symmetrical to the chassis. The module contains a 7,5 mm high and 35 mm wide DIN rail with screw channel, standard combs, two mounting brackets with insulation and edge protection. The HA module is available with a rail heights of 140 and 160 mm.

Technical data	
for frame width	700 mm
Frame width	700 mm
Frame depth	120 mm
Rail height	160 mm
Rail length	700 mm
Distance	50 mm
Bracket width	30 mm
Wiring space	85 cm ²
Top comb	Ja
Bottom comb	Ja

10.10.2019 – Subject to technical modification

Part-No. 380141M0005

USA: LUTZE INC.

13330 South Ridge Drive • Charlotte, NC 28273, USA
Tel. +1 (704) 504-0222 • Fax +1 (704) 504-0223
www.lutze.com • info@lutze.com

United Kingdom: LÜTZE Ltd.

Unit 3, Sandy Hill Park
Sandy Way, Amington • GB-Tamworth, Staffs B77 4DU
Tel. +44 (0)1827 31333-0 • Fax +44 (0)1827 31333-2
www.lutze.com • sales.gb@lutze.co.uk



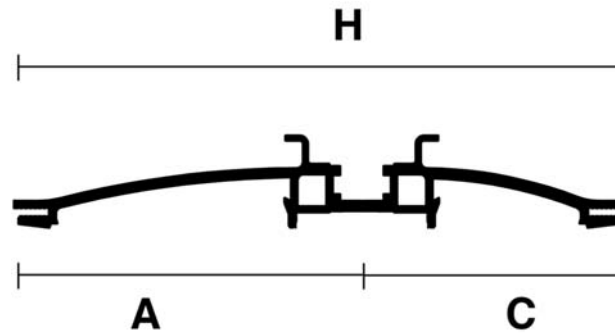
SYSTEMATIC TECHNOLOGY

Technical data sheet - Module AirSTREAM

General

Material	Aluminum
Surface	bright

Dimensions



A	90 mm
C	70 mm
H	160 mm

10.10.2019 – Subject to technical modification

Part-No. 380141M0005

USA: LUTZE INC.

13330 South Ridge Drive • Charlotte, NC 28273, USA
Tel. +1 (704) 504-0222 • Fax +1 (704) 504-0223
www.lutze.com • info@lutze.com

United Kingdom: LÜTZE Ltd.

Unit 3, Sandy Hill Park
Sandy Way, Amington • GB-Tamworth, Staffs B77 4DU
Tel. +44 (0)1827 31333-0 • Fax +44 (0)1827 31333-2
www.lutze.com • sales.gb@lutze.co.uk