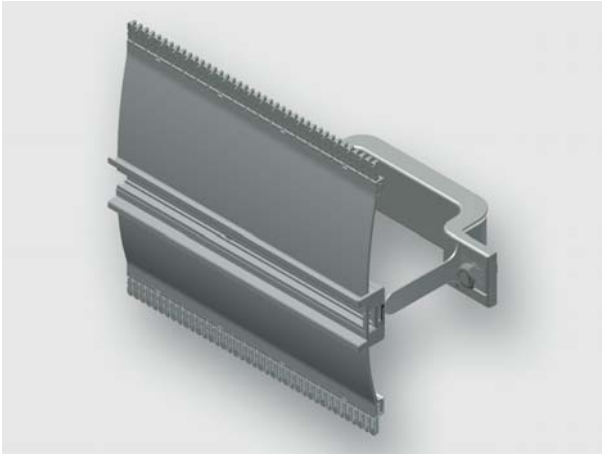


## Technical data sheet - Module AirSTREAM



Standard module, pre-assembled from rail type HA and mounting bracket

<b>Identification</b>	Type	HA160 0900-0900 BI30-055
	Part-No.	380141M0002

### Description

Module type	HA160
Description	<b>Hat profiles rails asymmetrical HA module:</b> The standard module HA is used for mounting of components where DIN rail mountings are not symmetrical to the chassis. The module contains a 7,5 mm high and 35 mm wide DIN rail with screw channel, standard combs, two mounting brackets with insulation and edge protection. The HA module is available with a rail heights of 140 and 160 mm.

### Technical data

for frame width	900 mm
Frame width	900 mm
Frame depth	90 mm
Rail height	160 mm
Rail length	900 mm
Distance	50 mm
Bracket width	30 mm
Wiring space	55 cm <sup>2</sup>
Top comb	Ja
Bottom comb	Ja

10.10.2019 – Subject to technical modification

Part-No. 380141M0002

USA: LUTZE INC.

13330 South Ridge Drive • Charlotte, NC 28273, USA  
Tel. +1 (704) 504-0222 • Fax +1 (704) 504-0223  
www.lutze.com • info@lutze.com

United Kingdom: LÜTZE Ltd.

Unit 3, Sandy Hill Park  
Sandy Way, Amington • GB-Tamworth, Staffs B77 4DU  
Tel. +44 (0)1827 31333-0 • Fax +44 (0)1827 31333-2  
www.lutze.com • sales.gb@lutze.co.uk



SYSTEMATIC TECHNOLOGY

# Technical data sheet - Module AirSTREAM

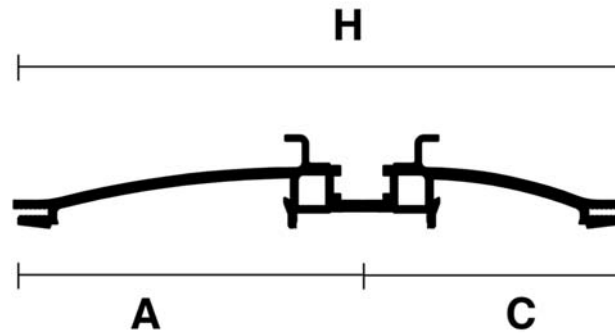
---

## General

Material	Aluminum
Surface	bright

---

## Dimensions



A	90 mm
C	70 mm
H	160 mm

10.10.2019 – Subject to technical modification

Part-No. 380141M0002

USA: LUTZE INC.

13330 South Ridge Drive • Charlotte, NC 28273, USA  
Tel. +1 (704) 504-0222 • Fax +1 (704) 504-0223  
www.lutze.com • info@lutze.com

United Kingdom: LÜTZE Ltd.

Unit 3, Sandy Hill Park  
Sandy Way, Amington • GB-Tamworth, Staffs B77 4DU  
Tel. +44 (0)1827 31333-0 • Fax +44 (0)1827 31333-2  
www.lutze.com • sales.gb@lutze.co.uk