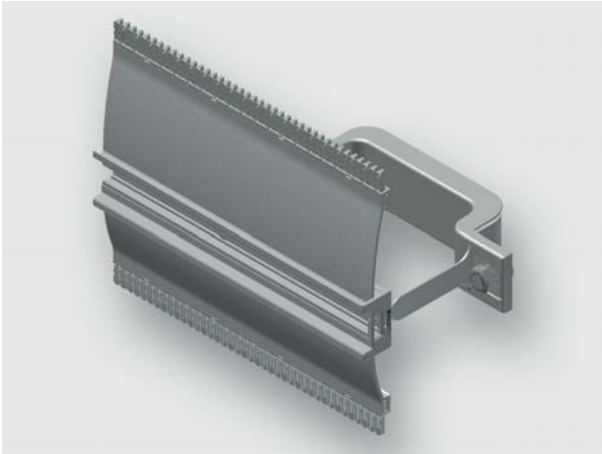


Technical data sheet - Module AirSTREAM



Standard module, pre-assembled from rail type
HA and mounting bracket

Identification	Type	HA140 1100-1100 BI30-055
	Part-No.	380140M0003

Description

Module type	HA140
Description	Hat profiles rails asymmetrical HA module: The standard module HA is used for mounting of components where DIN rail mountings are not symmetrical to the chassis. The module contains a 7,5 mm high and 35 mm wide DIN rail with screw channel, standard combs, two mounting brackets with insulation and edge protection. The HA module is available with a rail heights of 140 and 160 mm.

Technical data

for frame width	1100 mm
Frame width	1100 mm
Frame depth	90 mm
Rail height	140 mm
Rail length	1100 mm
Distance	50 mm
Bracket width	30 mm
Wiring space	55 cm ²
Top comb	Ja
Bottom comb	Ja

10.10.2019 – Subject to technical modification

Part-No. 380140M0003

USA: LUTZE INC.

13330 South Ridge Drive • Charlotte, NC 28273, USA
Tel. +1 (704) 504-0222 • Fax +1 (704) 504-0223
www.lutze.com • info@lutze.com

United Kingdom: LÜTZE Ltd.

Unit 3, Sandy Hill Park
Sandy Way, Amington • GB-Tamworth, Staffs B77 4DU
Tel. +44 (0)1827 31333-0 • Fax +44 (0)1827 31333-2
www.lutze.com • sales.gb@lutze.co.uk



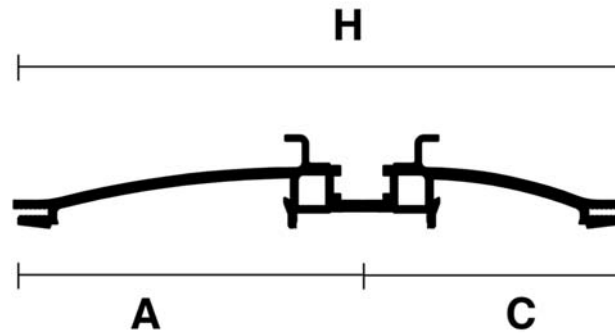
SYSTEMATIC TECHNOLOGY

Technical data sheet - Module AirSTREAM

General

Material	Aluminum
Surface	bright

Dimensions



A	80 mm
C	60 mm
H	140 mm

10.10.2019 – Subject to technical modification

Part-No. 380140M0003

USA: LUTZE INC.

13330 South Ridge Drive • Charlotte, NC 28273, USA
Tel. +1 (704) 504-0222 • Fax +1 (704) 504-0223
www.lutze.com • info@lutze.com

United Kingdom: LÜTZE Ltd.

Unit 3, Sandy Hill Park
Sandy Way, Amington • GB-Tamworth, Staffs B77 4DU
Tel. +44 (0)1827 31333-0 • Fax +44 (0)1827 31333-2
www.lutze.com • sales.gb@lutze.co.uk



SYSTEMATIC TECHNOLOGY