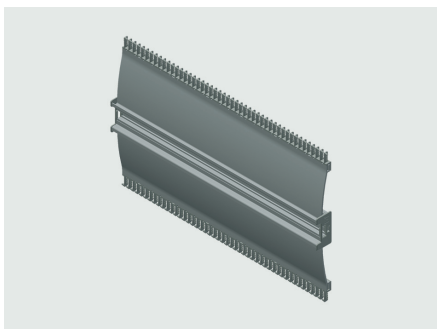


## Technical data sheet

Modular · 10 piece rail set

---

### HS160 Rail set



---

#### Identification

---

Type	HS160 1100
Part-No.	380106R1100

---

#### Product version

---

Datasheet version	00
-------------------	----

---

#### Description

---

Module type	HS160
Description	The rail set contains 10 rails including edge protection, combs and mounting holes. Depending on the rail type and installation depth, brackets can be used for mounting. Brackets and mounting material is not included in the set. Other lengths in a 50 mm grid are available on request.

---

#### Technical data

---

Rail height	160 mm
Rail length	1100 mm

---

#### General

---

Material	Aluminum
Surface	polished
PU (units)	10

---

#### Explanation

---

A	160 mm
---	--------

---

#### United Kingdom: LÜTZE Ltd.

Unit 3, Sandy Hill Park  
Sandy Way, Amington • GB-Tamworth, Staffs B77 4DU  
Tel. +44 (0)1827 31333-0 • Fax +44 (0)1827 31333-2  
www.lutze.com • sales.gb@lutze.co.uk

#### Germany: Friedrich Lütze GmbH

Postfach 12 24 (PLZ 71366) • Bruckwiesenstraße 17-19 • D-71384 Weinstadt  
Tel. +49 (0)7151 6053-0 • Fax +49 (0)7151 6053-277(-288)  
www.luetze.de • info@luetze.de

22.04.2021 • Subject to technical modification  
Part-No. 380106R1100 • Datasheet version: 00

**Dimensions**

