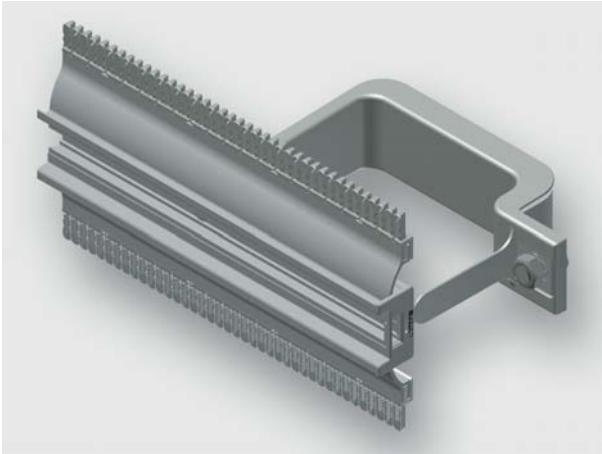


Technical data sheet - Module AirSTREAM



Standard module, pre-assembled from rail type HS and mounting bracket

| | | |
|-----------------------|----------|--------------------------|
| Identification | Type | HS080 0700-0700 BI30-055 |
| | Part-No. | 380102M0001 |

Description

| | |
|-------------|--|
| Module type | HS080 |
| Description | DIN rail HS module profile: The standard module HS is used for mounting of components which are suitable for mounting on DIN rails. The module contains a rail with a 7,5 mm high and 35 mm wide DIN rail with screw channel, standard combs, two mounting brackets with insulation and edge protection. The HS module is available with a rail heights of 40 and 160 mm. |

Technical data

| | |
|-----------------|--------------------|
| for frame width | 700 mm |
| Frame width | 700 mm |
| Frame depth | 90 mm |
| Rail height | 80 mm |
| Rail length | 700 mm |
| Distance | 50 mm |
| Bracket width | 30 mm |
| Wiring space | 55 cm ² |
| Top comb | Ja |
| Bottom comb | Ja |

10.10.2019 – Subject to technical modification

Part-No. 380102M0001

USA: LUTZE INC.

13330 South Ridge Drive • Charlotte, NC 28273, USA
Tel. +1 (704) 504-0222 • Fax +1 (704) 504-0223
www.lutze.com • info@lutze.com

United Kingdom: LÜTZE Ltd.

Unit 3, Sandy Hill Park
Sandy Way, Amington • GB-Tamworth, Staffs B77 4DU
Tel. +44 (0)1827 31333-0 • Fax +44 (0)1827 31333-2
www.lutze.com • sales.gb@lutze.co.uk



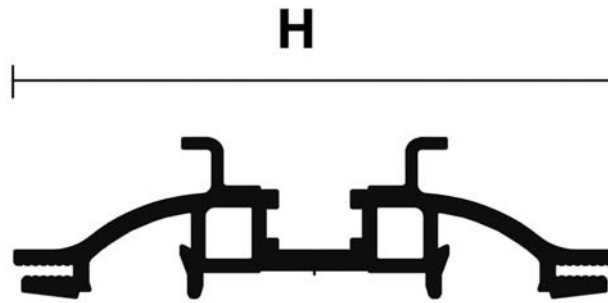
SYSTEMATIC TECHNOLOGY

Technical data sheet - Module AirSTREAM

General

| | |
|----------|----------|
| Material | Aluminum |
| Surface | bright |

Dimensions



H 80 mm

10.10.2019 – Subject to technical modification

Part-No. 380102M0001

USA: LUTZE INC.

13330 South Ridge Drive • Charlotte, NC 28273, USA
Tel. +1 (704) 504-0222 • Fax +1 (704) 504-0223
www.lutze.com • info@lutze.com

United Kingdom: LÜTZE Ltd.

Unit 3, Sandy Hill Park
Sandy Way, Amington • GB-Tamworth, Staffs B77 4DU
Tel. +44 (0)1827 31333-0 • Fax +44 (0)1827 31333-2
www.lutze.com • sales.gb@lutze.co.uk