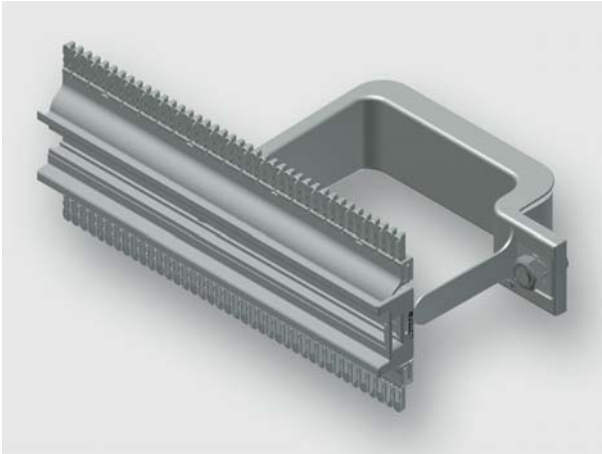


## Technical data sheet - Module AirSTREAM



Standard module, pre-assembled from rail type HS and mounting bracket

<b>Identification</b>	Type	HS060 1100-1100 BI30-085
	Part-No.	380101M0007

### Description

Module type	HS060
Description	<b>DIN rail HS module profile:</b> The standard module HS is used for mounting of components which are suitable for mounting on DIN rails. The module contains a rail with a 7,5 mm high and 35 mm wide DIN rail with screw channel, standard combs, two mounting brackets with insulation and edge protection. The HS module is available with a rail heights of 40 and 160 mm.

### Technical data

for frame width	1100 mm
Frame width	1100 mm
Frame depth	120 mm
Rail height	60 mm
Rail length	1100 mm
Distance	50 mm
Bracket width	30 mm
Wiring space	85 cm <sup>2</sup>
Top comb	Ja
Bottom comb	Ja

10.10.2019 – Subject to technical modification

Part-No. 380101M0007

USA: LUTZE INC.

13330 South Ridge Drive • Charlotte, NC 28273, USA  
Tel. +1 (704) 504-0222 • Fax +1 (704) 504-0223  
www.lutze.com • info@lutze.com

United Kingdom: LÜTZE Ltd.

Unit 3, Sandy Hill Park  
Sandy Way, Amington • GB-Tamworth, Staffs B77 4DU  
Tel. +44 (0)1827 31333-0 • Fax +44 (0)1827 31333-2  
www.lutze.com • sales.gb@lutze.co.uk



SYSTEMATIC TECHNOLOGY

# Technical data sheet - Module AirSTREAM

---

## General

Material	Aluminum
Surface	bright

---

## Dimensions



H 60 mm

10.10.2019 – Subject to technical modification

Part-No. 380101M0007

USA: LUTZE INC.

13330 South Ridge Drive • Charlotte, NC 28273, USA  
Tel. +1 (704) 504-0222 • Fax +1 (704) 504-0223  
www.lutze.com • info@lutze.com

United Kingdom: LÜTZE Ltd.

Unit 3, Sandy Hill Park  
Sandy Way, Amington • GB-Tamworth, Staffs B77 4DU  
Tel. +44 (0)1827 31333-0 • Fax +44 (0)1827 31333-2  
www.lutze.com • sales.gb@lutze.co.uk