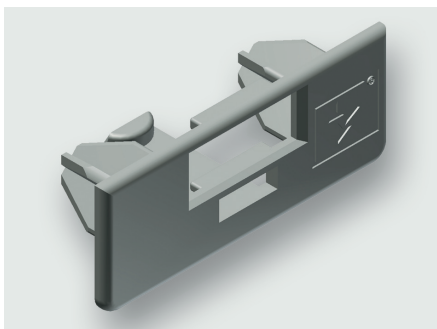


Technical data sheet

Wiring Accessories · Wire management

Edge protection for MS/MA modules



Identification

Type	KMS-060-200
Part-No.	380091.0010

Product version

Datasheet version	00
-------------------	----

Description

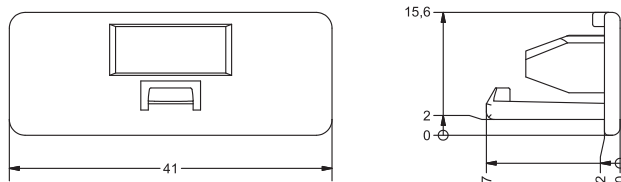
Description

Edge protection for the assembly rails to prevent injury on the sharp edges. Sliding nuts can be inserted through the center of the edge protector. As standard, the rail modules are equipped with edge protectors.

General

Material	PA 6.6
Surface	smooth
Halogen free according to	VDE 0472-815
Color	grey RAL 7035
Flammability rating	UL 94 V0
PU (units)	10

Dimensions



United Kingdom: LÜTZE Ltd.

Unit 3, Sandy Hill Park
Sandy Way, Amington · GB-Tamworth, Staffs B77 4DU
Tel. +44 (0)1827 31333-0 · Fax +44 (0)1827 31333-2
www.lutze.com · sales.gb@lutze.co.uk

Germany: Friedrich Lütze GmbH

Postfach 12 24 (PLZ 71366) · Bruckwiesenstraße 17-19 · D-71384 Weinstadt
Tel. +49 (0)7151 6053-0 · Fax +49 (0)7151 6053-277(-288)
www.luetze.de · info@luetze.de

13.04.2021 · Subject to technical modification
Part-No. 380091.0010 · Datasheet version: 00