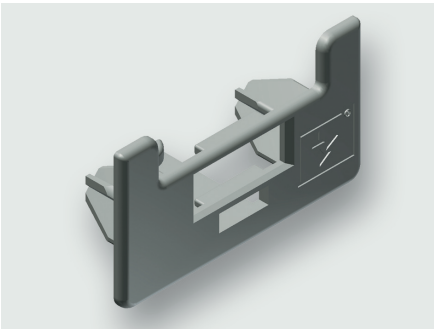


## Technical data sheet

Wiring Accessories · Wire management

### Edge protection for HS/HA modules



#### Identification

Type	KHS-040-200
Part-No.	380090.0010

#### Product version

Datasheet version	00
-------------------	----

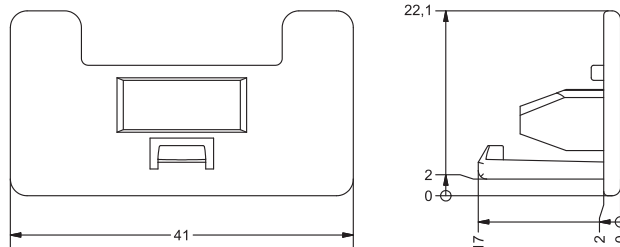
#### Description

Description	Edge protection for the DIN rails to prevent injury on the sharp edges of the DIN rails. Sliding nuts can be inserted through the center of the edge protector. As standard, the rail modules are equipped with edge protectors.
-------------	-------------------------------------------------------------------------------------------------------------------------------------------------------------------------------------------------------------------------------------

#### General

Material	PA 6.6
Surface	smooth
Halogen free according to	VDE 0472-815
Color	grey RAL 7035
Flammability rating	UL 94 V0
PU (units)	10

#### Dimensions



#### United Kingdom: LÜTZE Ltd.

Unit 3, Sandy Hill Park  
Sandy Way, Amington · GB-Tamworth, Staffs B77 4DU  
Tel. +44 (0)1827 31333-0 · Fax +44 (0)1827 31333-2  
www.lutze.com · sales.gb@lutze.co.uk

#### Germany: Friedrich Lütze GmbH

Postfach 12 24 (PLZ 71366) · Bruckwiesenstraße 17-19 · D-71384 Weinstadt  
Tel. +49 (0)7151 6053-0 · Fax +49 (0)7151 6053-277(-288)  
www.luetze.de · info@luetze.de

13.04.2021 · Subject to technical modification  
Part-No. 380090.0010 · Datasheet version: 00