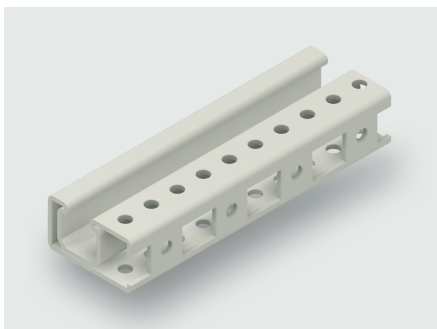


Technical data sheet

Side Support Modules

SR032 module



Identification

| | |
|----------|-------------|
| Type | SR032 |
| Part-No. | 380001M1898 |

Product version

| | |
|-------------------|----|
| Datasheet version | 00 |
|-------------------|----|

Description

| | |
|-------------|--|
| Description | The SR032 module consists of two side support rails to be used together with SR032 brackets for fastening of mounting profiles. The set includes 4 × edge protectors and 2 × grounding screws. |
|-------------|--|

Technical data

| | |
|-------------|---------|
| Rail height | 18 mm |
| Rail length | 1898 mm |
| Length | 1898 mm |

General

| | |
|------------|------------|
| Material | Steel |
| Surface | galvanized |
| PU (units) | 1 |

United Kingdom: LÜTZE Ltd.

Unit 3, Sandy Hill Park
Sandy Way, Amington • GB-Tamworth, Staffs B77 4DU
Tel. +44 (0)1827 31333-0 • Fax +44 (0)1827 31333-2
www.lutze.com • sales.gb@lutze.co.uk

Germany: Friedrich Lütze GmbH

Postfach 12 24 (PLZ 71366) • Bruckwiesenstraße 17-19 • D-71384 Weinstadt
Tel. +49 (0)7151 6053-0 • Fax +49 (0)7151 6053-277(-288)
www.luetze.de • info@luetze.de

13.04.2021 • Subject to technical modification
Part-No. 380001M1898 • Datasheet version: 00