

Technical data sheet

EMC Accessories · Grounding Device

Grounding strip, copper braiding, tin-plated
Single wire Cu ETP UNI 5649-71, similar to DIN 72333



Identification

Type EMVMB 25/200/10
Part No. [346116.0010](#)

Product version

Datasheet version 01

Technical data

Length 200 mm
Cross-section surface 25 mm²
Ampacity 150 A

Connecting lead

Description both ends drilled, cold pressed

Construction

Wire conductors 0.15 mm²

General

Operation temperature range +5 °C ... +105 °C
Storage temperature range -30 °C ... +90 °C
Weight 0.25 kg/m
PU (units) 10

United Kingdom: LÜTZE Ltd.

Unit 3, Sandy Hill Park
Sandy Way, Amington · GB-Tamworth, Staffs B77 4DU
Tel. +44 (0)1827 31333-0 · Fax +44 (0)1827 31333-2
www.lutze.com · sales.gb@lutze.co.uk

Germany: Friedrich Lütze GmbH

Postfach 12 24 (PLZ 71366) · Bruckwiesenstraße 17-19 · D-71384 Weinstadt
Tel. +49 (0)7151 6053-0 · Fax +49 (0)7151 6053-277(-288)
www.luetze.de · info@luetze.de

Technical data sheet

EMC Accessories · Grounding Device

Notes and Comments

Comments

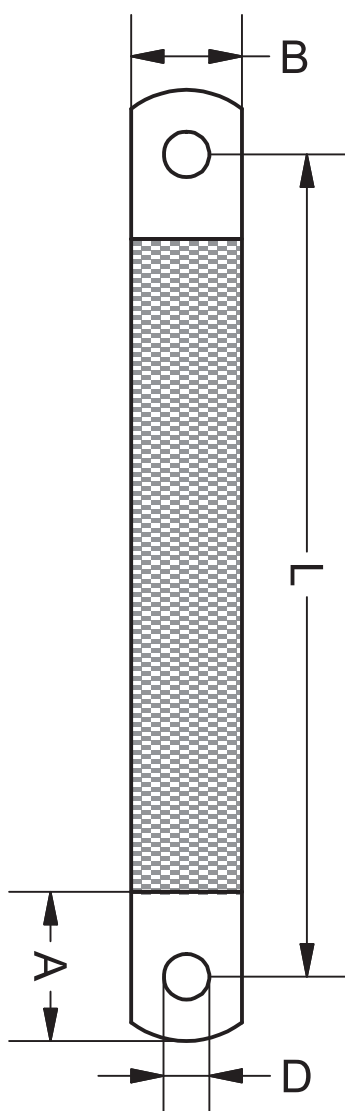
D = hole diameter
A = sleeve length
B = width
L = distance of hole

Other lengths are available upon request

Explanation

A	25 mm
B	23 mm
D	10.5 mm
L	200 mm

Dimensions



Use

