

## Technical data sheet

EMC Accessories · Grounding Device

---

**Grounding strip, copper braiding, tin-plated**  
**Single wire Cu ETP UNI 5649-71, similar to DIN 72333**



---

### Identification

Type EMVMB 16/200/8  
Part No. [346113.0010](#)

---

### Product version

Datasheet version 01

---

### Technical data

Length 200 mm  
Cross-section surface 16 mm<sup>2</sup>  
Ampacity 120 A

---

### Connecting lead

Description both ends drilled, cold pressed

---

### Construction

Wire conductors 0.15 mm<sup>2</sup>

---

### General

Operation temperature range +5 °C ... +105 °C  
Storage temperature range -30 °C ... +90 °C  
Weight 0.16 kg/m  
PU (units) 10

---

#### United Kingdom: LÜTZE Ltd.

Unit 3, Sandy Hill Park  
Sandy Way, Amington · GB-Tamworth, Staffs B77 4DU  
Tel. +44 (0)1827 31333-0 · Fax +44 (0)1827 31333-2  
[www.lutze.com](http://www.lutze.com) · [sales.gb@lutze.co.uk](mailto:sales.gb@lutze.co.uk)

#### Germany: Friedrich Lütze GmbH

Postfach 12 24 (PLZ 71366) · Bruckwiesenstraße 17-19 · D-71384 Weinstadt  
Tel. +49 (0)7151 6053-0 · Fax +49 (0)7151 6053-277(-288)  
[www.luetze.de](http://www.luetze.de) · [info@luetze.de](mailto:info@luetze.de)

22.09.2023 · Subject to technical modification  
Part No. [346113.0010](#) · Datasheet version: 01

## Technical data sheet

### EMC Accessories · Grounding Device

#### Notes and Comments

##### Comments

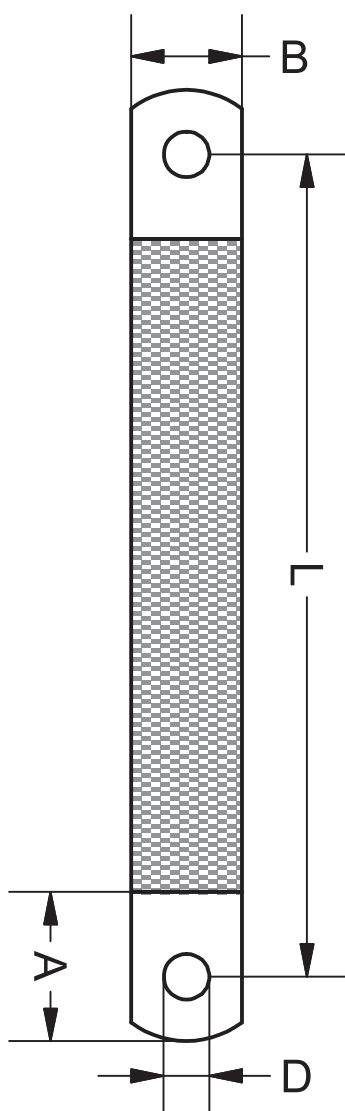
D = hole diameter  
A = sleeve length  
B = width  
L = distance of hole

**Other lengths are available upon request**

#### Explanation

A	25 mm
B	15 mm
D	8.5 mm
L	200 mm

#### Dimensions



Use

