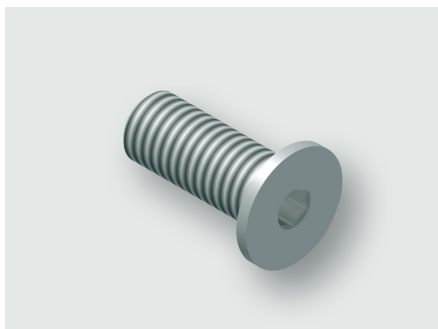


Technical data sheet

Mounting Accessories · Component mounting

Bolt



Identification

Type	M8 x 10
Part-No.	345628.0100

Product version

Datasheet version	00
-------------------	----

Description

Description	The flat screw head allows for flush installation into the base of the slot of the RG rails and therefore does not obstruct the sliding nuts above in the sliding nut channel.
-------------	--

Technical data

Length	10 mm
max. tightening torque	10 Nm
Width across flats	T25

General

Material	Steel
Surface	bright galvanized
Thread	M8
Operation temperature range	-5 °C ... +80 °C
Storage temperature range	-30 °C ... +90 °C
Weight/100 units	0.45 kg
PU (units)	100

United Kingdom: LÜTZE Ltd.

Unit 3, Sandy Hill Park
Sandy Way, Amington · GB-Tamworth, Staffs B77 4DU
Tel. +44 (0)1827 31333-0 · Fax +44 (0)1827 31333-2
www.lutze.com · sales.gb@lutze.co.uk

Germany: Friedrich Lütze GmbH

Postfach 12 24 (PLZ 71366) · Bruckwiesenstraße 17-19 · D-71384 Weinstadt
Tel. +49 (0)7151 6053-0 · Fax +49 (0)7151 6053-277(-288)
www.luetze.de · info@luetze.de

Technical data sheet

Mounting Accessories · Component mounting

Dimensions

