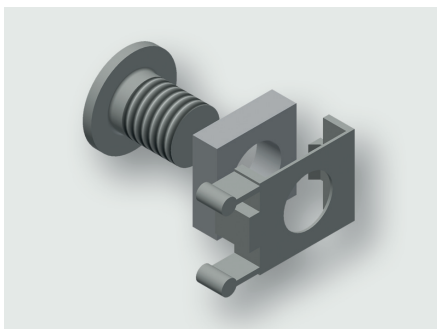


## Technical data sheet

### Mounting Accessories · Component mounting

---

#### Fastening set



---

#### Identification

Type	BSRG M6 HS/HA
Part-No.	332969.0001

---

#### Product version

Datasheet version	00
-------------------	----

---

#### Description

Description	Mounting kit for attaching an RG bar to a HS/HA module. Mounting kit comprising: 4 × screws M6×10 or M6×16 4 × sliding nuts M6 4 × sliding nut cage
-------------	---

---

#### General

Material	Steel
Surface	galvanized
PU (units)	1

---

#### United Kingdom: LÜTZE Ltd.

Unit 3, Sandy Hill Park  
Sandy Way, Amington · GB-Tamworth, Staffs B77 4DU  
Tel. +44 (0)1827 31333-0 · Fax +44 (0)1827 31333-2  
www.lutze.com · sales.gb@lutze.co.uk

#### Germany: Friedrich Lütze GmbH

Postfach 12 24 (PLZ 71366) · Bruckwiesenstraße 17-19 · D-71384 Weinstadt  
Tel. +49 (0)7151 6053-0 · Fax +49 (0)7151 6053-277(-288)  
www.luetze.de · info@luetze.de

13.04.2021 · Subject to technical modification  
Part-No. 332969.0001 · Datasheet version: 00