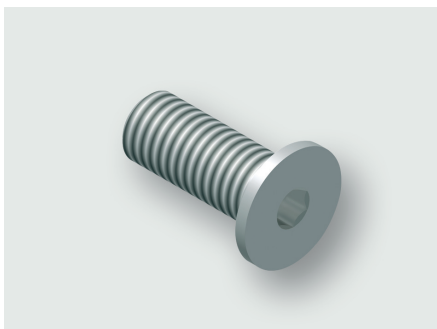


## Technical data sheet

### Mounting Accessories · Component mounting

---

#### Bolt



---

#### Identification

Type	M6 x 12
Part-No.	332968.0100

---

#### Product version

Datasheet version	00
-------------------	----

---

#### Description

Description	The flat screw head allows for flush installation into the base of the slot of the RG rails and therefore does not obstruct the sliding nuts above in the sliding nut channel.
-------------	--

---

#### Technical data

Length	12 mm
--------	-------

---

#### General

Material	Steel
Surface	galvanized
Thread	M6
PU (units)	100

---

#### United Kingdom: LÜTZE Ltd.

Unit 3, Sandy Hill Park  
Sandy Way, Amington · GB-Tamworth, Staffs B77 4DU  
Tel. +44 (0)1827 31333-0 · Fax +44 (0)1827 31333-2  
[www.lutze.com](http://www.lutze.com) · [sales.gb@lutze.co.uk](mailto:sales.gb@lutze.co.uk)

#### Germany: Friedrich Lütze GmbH

Postfach 12 24 (PLZ 71366) · Bruckwiesenstraße 17-19 · D-71384 Weinstadt  
Tel. +49 (0)7151 6053-0 · Fax +49 (0)7151 6053-277(-288)  
[www.luetze.de](http://www.luetze.de) · [info@luetze.de](mailto:info@luetze.de)