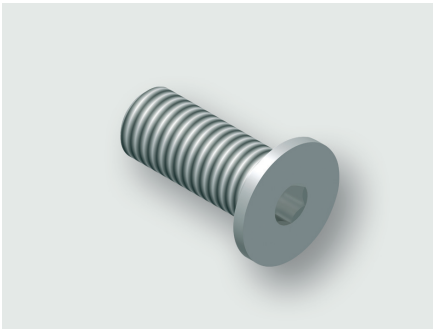


Technical data sheet

Mounting Accessories · Component mounting

Bolt



Identification

| | |
|----------|-------------|
| Type | M6 x 60 |
| Part-No. | 332965.0100 |

Product version

| | |
|-------------------|----|
| Datasheet version | 00 |
|-------------------|----|

Description

| | |
|-------------|--|
| Description | The flat screw head allows for flush installation into the base of the slot of the RG rails and therefore does not obstruct the sliding nuts above in the sliding nut channel. |
|-------------|--|

Technical data

| | |
|--------|-------|
| Length | 60 mm |
|--------|-------|

General

| | |
|------------|------------|
| Material | Steel |
| Surface | galvanized |
| Thread | M6 |
| PU (units) | 100 |

United Kingdom: LÜTZE Ltd.

Unit 3, Sandy Hill Park
Sandy Way, Amington · GB-Tamworth, Staffs B77 4DU
Tel. +44 (0)1827 31333-0 · Fax +44 (0)1827 31333-2
www.lutze.com · sales.gb@lutze.co.uk

Germany: Friedrich Lütze GmbH

Postfach 12 24 (PLZ 71366) · Bruckwiesenstraße 17-19 · D-71384 Weinstadt
Tel. +49 (0)7151 6053-0 · Fax +49 (0)7151 6053-277(-288)
www.luetze.de · info@luetze.de