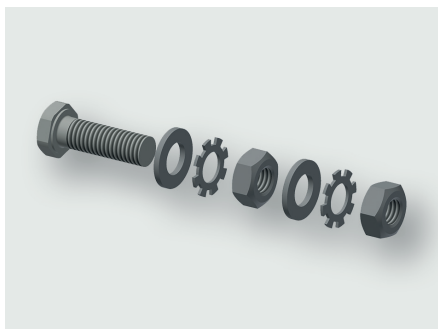


Technical data sheet

Mounting Accessories · Component mounting

Grounding kit



Identification

Type	ES 8
Part-No.	331805

Product version

Datasheet version	00
-------------------	----

Description

Description	Grounding kit Grounding kit comprising: 2 × washer US 8,4 (M8) or 7,4 (M6) 2 × locknut M8 SW13 / M6 SW10 2 × spring toothed lock washer FZ 8,4 / FZ 6,4 1 × screw M8×25 / M6×25 2 × grounding label
-------------	---

Connecting lead

Description	Grounding kit
-------------	---------------

General

Material	Steel
Surface	galvanized
Weight/100 units	0.23 kg
PU (units)	1

United Kingdom: LÜTZE Ltd.

Unit 3, Sandy Hill Park
Sandy Way, Amington · GB-Tamworth, Staffs B77 4DU
Tel. +44 (0)1827 31333-0 · Fax +44 (0)1827 31333-2
www.lutze.com · sales.gb@lutze.co.uk

Germany: Friedrich Lütze GmbH

Postfach 12 24 (PLZ 71366) · Bruckwiesenstraße 17-19 · D-71384 Weinstadt
Tel. +49 (0)7151 6053-0 · Fax +49 (0)7151 6053-277(-288)
www.luetze.de · info@luetze.de

13.04.2021 · Subject to technical modification
Part-No. 331805 · Datasheet version: 00