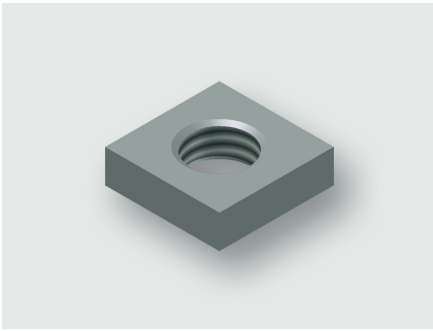


Technical data sheet

Mounting Accessories · Component mounting

Sliding nut



Identification

Type	GL M8
Part-No.	330944.0100

Product version

Datasheet version	00
-------------------	----

Description

Description	Sliding nuts for use in the sliding nut channel of the AirSTREAM rail modules. GL M6 is used to attach the RG rails.
-------------	-----------------------------------------------------------------------------------------------------------------------------

General

Dimensions (w × h × d)	13.0 mm × 4.0 mm × 13.0 mm
Material	Steel
Surface	bright galvanized, Punched edges bare/silver
Operation temperature range	-5 °C ... +80 °C
Storage temperature range	-30 °C ... +90 °C
PU (units)	100

United Kingdom: LÜTZE Ltd.

Unit 3, Sandy Hill Park
Sandy Way, Amington • GB-Tamworth, Staffs B77 4DU
Tel. +44 (0)1827 31333-0 • Fax +44 (0)1827 31333-2
www.lutze.com • sales.gb@lutze.co.uk

Germany: Friedrich Lütze GmbH

Postfach 12 24 (PLZ 71366) • Bruckwiesenstraße 17-19 • D-71384 Weinstadt
Tel. +49 (0)7151 6053-0 • Fax +49 (0)7151 6053-277(-288)
www.luetze.de • info@luetze.de

Technical data sheet

Mounting Accessories · Component mounting

Dimensions

