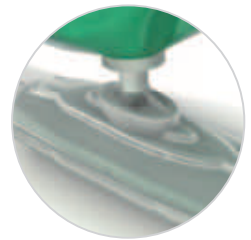


SUBMARINE® Straight Series Cast resin joints for straight connections

The **SUBMARINE® Straight Series** kits allow 0.6/1 kV single and multicore cable connections with up to five conductors. Kits include:

- two transparent half-shells with snap-shut closure, so that the connection is visible before the resin is poured;
- two-component final solid state polyurethane resin, already in the correct mixing ratio;
- **Direct Injection pouring system (DIPS)** allows to inject the pre-mixed resin inside the joint without contact with the external environment. No leakage and no personal contact, ensuring maximum safety for the operator and the environment;
- modular cores separator;
- in some versions, a pre-assembled insulated five-pole terminal block with Allen key



Technical specifications

- Compliant with the standard for 0.6/1 kV low voltage joints (CEI EN 50393)
- Protection degree: equivalent to IPX8 (CEI EN 60529) tested in water at a depth of one metre (CEI 50393 par. 8.6.3)
- Operating temperature: -20 to 90 °C
- Double insulation (in versions with terminal block)
- Final solid state polyurethane resin (green colour)
- Shelf life: 3 years

Applications

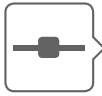
- Straight connections on 0.6/1 kV single-core cables and multicore cables with up to five cores
- For installation in cable ducts, underground, overhead, submersed
- Street lighting systems

Advantages

- Permanent installation
- Excellent resistance at great depths
- Direct Injection pouring system (DIPS)
- Transparent shell
- Integrated cores separator
- Excellent electrical insulation
- Good mechanical resistance
- 7 sizes for conductors with cross-section up to 630 mm²



Watch the video



SUBMARINE® Straight Series · final solid state polyurethane resin joints

Straight connections

SIZE	CODE	SEPARATOR/ TERMINAL BLOCK	DIRECT INJECTION POURING SYSTEM	CABLE DIAMETER MIN-MAX [mm]	SINGLE-CORE CABLES		MULTICORE CABLES	
					NO. CORES	CONDUCTOR CROSS-SECTION MIN – MAX [mm²]	MAX NO. OF CORES	CONDUCTOR CROSS-SECTION MIN – MAX [mm²]
0	SKA0			8 – 26	⊙	6 – 35	⊗	1.5 – 10
1	SKA1			7 – 30	⊙	6 – 35	⊗	1.5 – 16
	A10410							
2	SKA2			8 – 35	⊙	25 – 185	⊗	4 – 25
	A20425							
3S	SKA3S			23 – 35	⊙	50 – 185	⊗	25 – 50
3	SKA3			20 – 54	⊙	95 – 400	⊗	25 – 120
							⊗	25 – 95
4	SKA4			33 – 55	⊙	240 – 500	⊗	70 – 185
							⊗	95 – 150
5	SKA5			45 – 73	⊙	400 – 630	⊗	150 – 300
6	SKA6			55 – 80	-	-	⊗	185 – 400

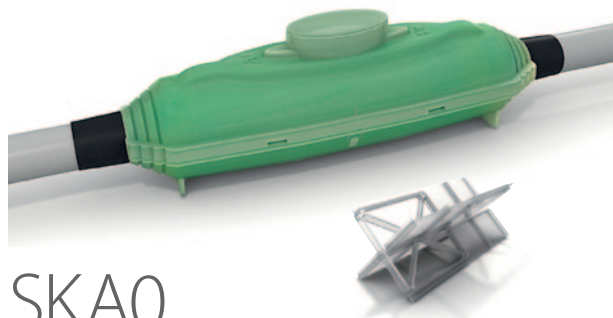
Re-enterable, reusable, and eco-friendly silicone resin Resil Joint RJ Series joints (page 68) are available in alternative

LOW VOLTAGE CAST RESIN JOINT
submarine

SIZE

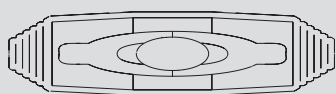
0

- Compliant with standard for 0.6/1 kV low voltage joints (CEI EN 50393)
- Protection level: equivalent to IPX8 (CEI EN 60529) tested in water at a depth of one metre (CEI 50393 par. 8.6.3)
- Final solid state polyurethane resin
- Operating temperature: -20 to 90 °C
- Shelf life: 3 years
- Cores separator included

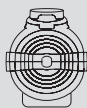


SKA0

Polyurethane resin joint
Straight connections - cables up to 4 cores
Cores separator included



190



45 [mm]

Applications

- Underground installation
- Submersed installation
- Overhead installation

Advantages

- Excellent electrical insulation
- Watertight sealing of the connection
- Excellent protection against corrosion
- Excellent mechanical resistance





Re-enterable, reusable, and eco-friendly silicone resin Resil Joint RJA Series joints (page 68) available in alternative

Kit contents

- Two transparent polypropylene half-shells - Size 0
- Four-poles cores separator
- Bag of two-component resin
- Insulating tape

Table of use

 **STRAIGHT connections**

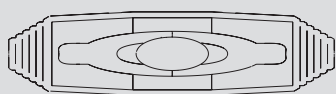
Cores	Cable diameter Ø (mm)	Conductor cross-section (mm ²)	
		min	max
	8 - 26	6	35
		1.5	10
			
			

LOW VOLTAGE CAST RESIN JOINT
submarine

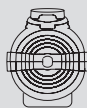
SIZE

1

- Compliant with standard for 0.6/1 kV low voltage joints (CEI EN 50393)
- Protection level: equivalent to IPX8 (CEI EN 60529) tested in water at a depth of one metre (CEI 50393 par. 8.6.3)
- Final solid state polyurethane resin
- Operating temperature: -20 to 90 °C
- Shelf life: 3 years
- Cores separator included



190



51 [mm]

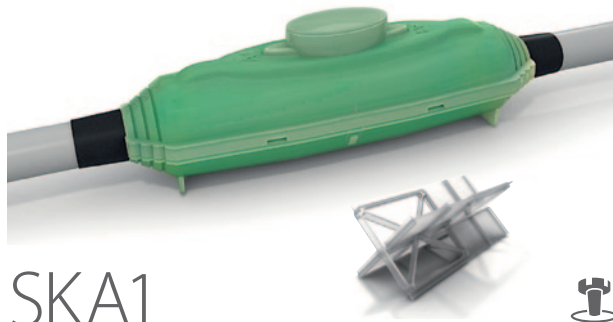
Applications

- Underground installation
- Submersed installation
- Overhead installation

Advantages

- Excellent electrical insulation
- Watertight sealing of the connection
- Excellent protection against corrosion
- Excellent mechanical resistance

Re-enterable, reusable, and eco-friendly silicone resin Resil Joint RJA Series joints (page 68) available in alternative



SKA1

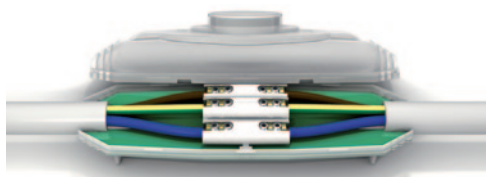
Polyurethane resin joint
Straight connections - cables up to 4 cores
Cores separator included

Kit contents

- Two transparent polypropylene half-shells - Size 1
- Cores separator
- Bag of two-component resin with DIPS
- Insulating tape
- Latex protective gloves

STRAIGHT connections

Cores	Cable diameter Ø (mm)	Conductor cross-section (mm ²)	
		min	max
	7 - 30	6	35
		1.5	16



A10410



Polyurethane resin joint
Straight connections - cables up to 5 cores
Insulated five-pole terminal block included

- Double insulation

Kit contents

- Same as SKA1 kit plus:
- Pre-assembled insulated five-pole terminal block
- Allen key for the terminal block

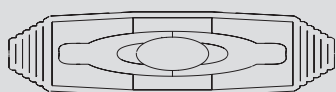
STRAIGHT connections

Cores	Cable diameter Ø (mm)	Conductor cross-section (mm ²)	
		min	max
	7 - 30	1.5	10

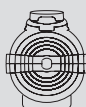
LOW VOLTAGE CAST RESIN JOINT
submarine

SIZE
2

- Compliant with standard for 0.6/1 kV low voltage joints (CEI EN 50393)
- Protection level: equivalent to IPX8 (CEI EN 60529) tested in water at a depth of one metre (CEI 50393 par. 8.6.3)
- Final solid state polyurethane resin
- Operating temperature: -20 to 90 °C
- Shelf life: 3 years
- Cores separator included



240



62 [mm]

Applications

- Underground installation
- Submersed installation
- Overhead installation

Advantages

- Excellent electrical insulation
- Watertight sealing of the connection
- Excellent protection against corrosion
- Excellent mechanical resistance

Re-enterable, reusable, and eco-friendly silicone resin Resil Joint RJA Series joints (page 68) available in alternative



SKA2



Polyurethane resin joint
Straight connections - cables up to 4 cores
Cores separator included

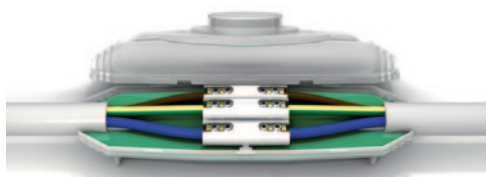
Kit contents

- Two transparent polypropylene half-shells - Size 2
- Cores separator
- Bag of two-component resin with DIPS
- Insulating tape
- Latex protective gloves



STRAIGHT connections

Cores	Cable diameter Ø (mm)	Conductor cross-section (mm ²)	
		min	max
	8 - 35	25	185
		4	25



A20425



Polyurethane resin joint
Straight connections - cables up to 5 cores
Insulated five-pole terminal block included

- Double insulation

Kit contents

- Same as SKA2 kit plus:
- Pre-assembled insulated five-pole terminal block
- Allen key for the terminal block



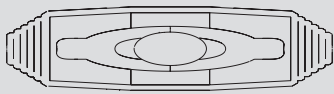
STRAIGHT connections

Cores	Cable diameter Ø (mm)	Conductor cross-section (mm ²)	
		min	max
	8 - 35	4	25

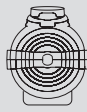
LOW VOLTAGE CAST RESIN JOINT
submarine

SIZE
3S

- Compliant with standard for 0.6/1 kV low voltage joints (CEI EN 50393)
- Protection level: equivalent to IPX8 (CEI EN 60529) tested in water at a depth of one metre (CEI 50393 par. 8.6.3)
- Final solid state polyurethane resin
- Operating temperature: -20 to 90 °C
- Shelf life: 3 years
- Cores separator included



357



62 [mm]

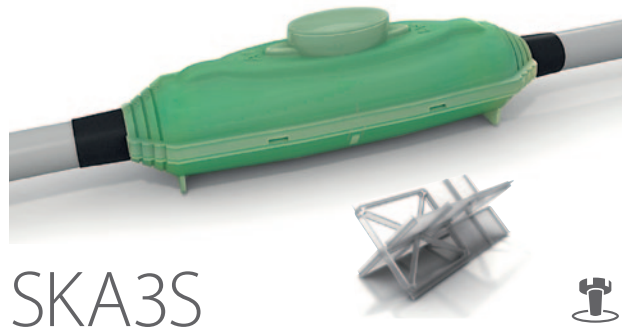
Applications

- Underground installation
- Submersed installation
- Overhead installation

Advantages

- Excellent electrical insulation
- Watertight sealing of the connection
- Excellent protection against corrosion
- Excellent mechanical resistance

Re-enterable, reusable, and eco-friendly silicone resin Resil Joint RJA Series joints (page 68) available in alternative



SKA3S

Polyurethane resin joint
Straight connections - cables up to 4 cores
Cores separator included

Kit contents

- Two transparent polypropylene half-shells - Size 3S
- Four-pole cores separator
- Bag of two-component resin
- Direct Injection pouring system (DIPS)
- Insulating tape
- Latex protective gloves

Table of use



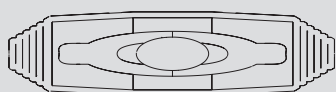
STRAIGHT connections

Cores	Cable diameter Ø (mm)	Conductor cross-section (mm ²)	
		min	max
1	23 – 35	50	185
2		25	50
3			
4			

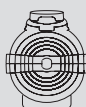
LOW VOLTAGE CAST RESIN JOINT
submarine

SIZE
3

- Compliant with standard for 0.6/1 kV low voltage joints (CEI EN 50393)
- Protection level: equivalent to IPX8 (CEI EN 60529) tested in water at a depth of one metre (CEI 50393 par. 8.6.3)
- Final solid state polyurethane resin
- Operating temperature: -20 to 90 °C
- Shelf life: 3 years
- Cores separator included



325



95 [mm]

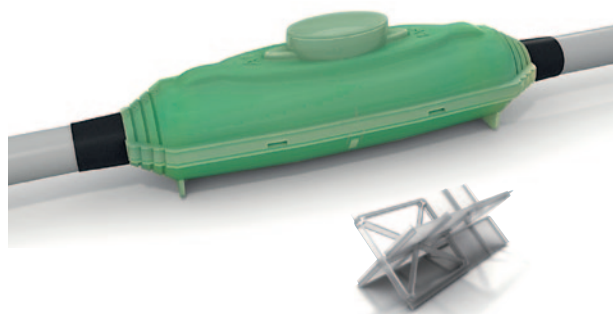
Applications

- Underground installation
- Submersed installation
- Overhead installation

Advantages

- Excellent electrical insulation
- Watertight sealing of the connection
- Excellent protection against corrosion
- Excellent mechanical resistance

Re-enterable, reusable, and eco-friendly silicone resin Resil Joint RJA Series joints (page 68) available in alternative



SKA3



Polyurethane resin joint
Straight connections - cables up to 4 cores
Cores separator included

Kit contents

- Two transparent polypropylene half-shells - Size 3
- Four-pole cores separator
- Bag of two-component resin
- Direct Injection pouring system (DIPS)
- Insulating tape
- Latex protective gloves

Table of use



STRAIGHT connections

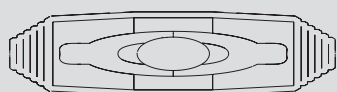
Cores	Cable diameter Ø (mm)	Conductor cross-section (mm ²)	
		min	max
1		95	400
2	20 - 54	25	120
3		25	95
4		25	95

LOW VOLTAGE CAST RESIN JOINT
submarine

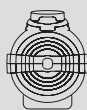
SIZE

4

- Compliant with standard for 0.6/1 kV low voltage joints (CEI EN 50393)
- Protection level: equivalent to IPX8 (CEI EN 60529) tested in water at a depth of one metre (CEI 50393 par. 8.6.3)
- Final solid state polyurethane resin
- Operating temperature: -20 to 90 °C
- Shelf life: 3 years
- Cores separator included



520



100 [mm]

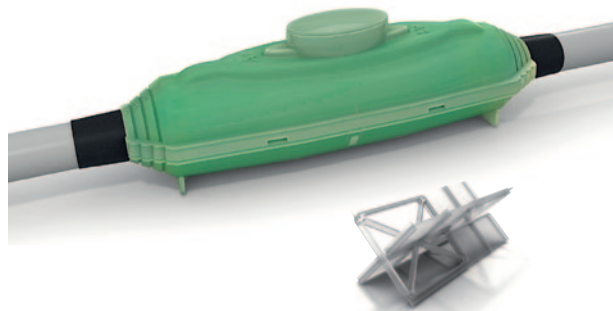
Applications

- Underground installation
- Submersed installation
- Overhead installation

Advantages

- Excellent electrical insulation
- Watertight sealing of the connection
- Excellent protection against corrosion
- Excellent mechanical resistance

Re-enterable, reusable, and eco-friendly silicone resin Resil Joint RJA Series joints (page 68) available in alternative



SKA4



Polyurethane resin joint
Straight connections - cables up to 4 cores
Cores separator included

Kit contents

- Two transparent polypropylene half-shells - Size 4
- Four-pole cores separator
- Bag of two-component resin
- Direct Injection pouring system (DIPS)
- Insulating tape
- Latex protective gloves

Table of use



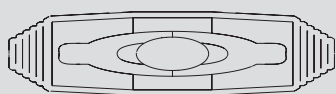
STRAIGHT connections

Cores	Cable diameter Ø (mm)	Conductor cross-section (mm ²)	
		min	max
1		240	500
2	33 - 55	70	185
3			
4		95	150

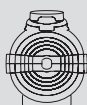
LOW VOLTAGE CAST RESIN JOINT
submarine

SIZE
5

- Compliant with standard for 0.6/1 kV low voltage joints (CEI EN 50393)
- Protection level: equivalent to IPX8 (CEI EN 60529) tested in water at a depth of one metre (CEI 50393 par. 8.6.3)
- Final solid state polyurethane resin
- Operating temperature: -20 to 90 °C
- Shelf life: 3 years
- Cores separator included



670



120 [mm]

Applications

- Underground installation
- Submersed installation
- Overhead installation

Advantages

- Excellent electrical insulation
- Watertight sealing of the connection
- Excellent protection against corrosion
- Excellent mechanical resistance

Re-enterable, reusable, and eco-friendly silicone resin Resil Joint RJA Series joints (page 68) available in alternative



SKA5



Polyurethane resin joint
Straight connections - cables up to 4 cores
Cores separator included

Kit contents

- Two transparent polypropylene half-shells - Size 5
- Four-pole cores separator
- Bag of two-component resin
- Direct Injection pouring system (DIPS)
- Insulating tape
- Latex protective gloves

Table of use



STRAIGHT connections

Cores	Cable diameter Ø (mm)	Conductor cross-section (mm ²)	
		min	max
1	45 - 73	400	630
2		150	300
3			
4			

LOW VOLTAGE CAST RESIN JOINT
submarine

SIZE

6

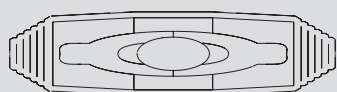
- Compliant with standard for 0.6/1 kV low voltage joints (CEI EN 50393)
- Protection level: equivalent to IPX8 (CEI EN 60529) tested in water at a depth of one metre (CEI 50393 par. 8.6.3)
- Final solid state polyurethane resin
- Operating temperature: -20 to 90 °C
- Shelf life: 3 years
- Cores separator included



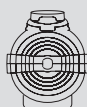
SKA6



Polyurethane resin joint
Straight connections - cables up to 4 cores
Cores separator included



870



200 [mm]

Applications

- Underground installation
- Submersed installation
- Overhead installation

Advantages

- Excellent electrical insulation
- Watertight sealing of the connection
- Excellent protection against corrosion
- Excellent mechanical resistance

Re-enterable, reusable, and eco-friendly silicone resin Resil Joint RJA Series joints (page 68) available in alternative

Kit contents

- Two transparent polypropylene half-shells - Size 6
- Four-pole cores separator
- Bag of two-component resin
- Direct Injection pouring system (DIPS)
- Insulating tape
- Latex protective gloves

Table of use



STRAIGHT connections

Cores	Cable diameter Ø (mm)	Conductor cross-section (mm ²)	
		min	max
1	55 - 80		
2			
3		185	400
4			