



80x80x25 mm

33.0~45.0 CFM

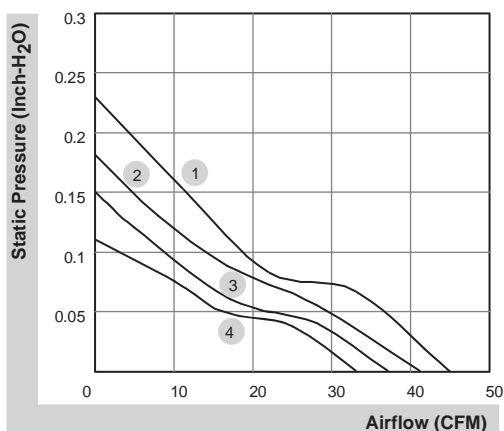


■ Specifications

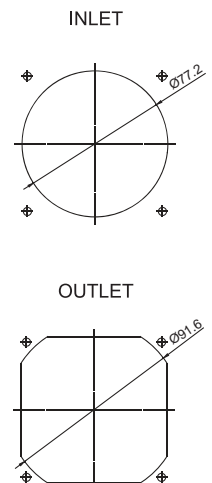
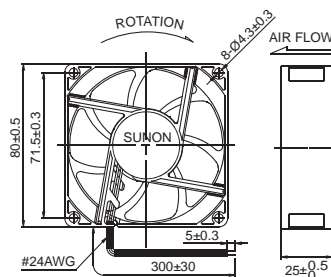
|  | Bearing | Rating Voltage | Power Current | Power Consumption | Speed | Air Flow | Static Pressure | Noise | Weight | Curve |
|---|---------|----------------|---------------|-------------------|-------|----------|-------------------------|---------|--------|-------|
| | ● VAPO | (VDC) | (mA) | (WATTS) | (RPM) | (CFM) | (Inch-H ₂ O) | (dB(A)) | (g) | |
| ME80251VX-000U-A99 | ● | 12 | 160 | 1.92 | 3600 | 45.0 | 0.23 | 37.0 | 89.0 | 1 |
| ME80251V1-000U-A99 | ● | 12 | 145 | 1.70 | 3200 | 41.0 | 0.18 | 33.0 | 77.0 | 2 |
| ME80251V2-000U-A99 | ● | 12 | 120 | 1.40 | 2900 | 37.0 | 0.15 | 30.0 | 75.0 | 3 |
| ME80251V3-000U-A99 | ● | 12 | 81 | 1.10 | 2600 | 33.0 | 0.11 | 28.0 | 75.0 | 4 |
| ME80252VX-000U-A99 | ● | 24 | 90 | 2.20 | 3600 | 45.0 | 0.23 | 37.0 | 89.0 | 1 |
| ME80252V1-000U-A99 | ● | 24 | 73 | 1.80 | 3200 | 41.0 | 0.18 | 33.0 | 75.0 | 2 |
| ME80252V2-000U-A99 | ● | 24 | 59 | 1.40 | 2900 | 37.0 | 0.15 | 30.0 | 75.0 | 3 |
| ME80252V3-000U-A99 | ● | 24 | 49 | 1.20 | 2600 | 33.0 | 0.11 | 28.0 | 75.0 | 4 |

| Model | Bearing | Rating Voltage | Power Current | Power Consumption | Speed | Air Flow | Static Pressure | Noise | Weight | Curve |
|--------------------|---|----------------|---------------|-------------------|-------|----------|-------------------------|---------|--------|-------|
| |  | (VDC) | (mA) | (WATTS) | (RPM) | (CFM) | (Inch-H ₂ O) | (dB(A)) | (g) | |
| EE80251BX-000U-A99 | ⊕ | 12 | 150 | 1.80 | 3600 | 45.0 | 0.23 | 38.0 | 89.0 | 1 |
| EE80251B1-000U-A99 | ⊕ | 12 | 145 | 1.70 | 3200 | 41.0 | 0.18 | 33.0 | 75.0 | 2 |
| EE80251B2-000U-999 | ⊕ | 12 | 120 | 1.40 | 2900 | 37.0 | 0.15 | 30.0 | 75.0 | 3 |
| EE80251B3-000U-999 | ⊕ | 12 | 90 | 1.10 | 2600 | 33.0 | 0.11 | 28.0 | 75.0 | 4 |
| EE80252BX-000U-A99 | ⊕ | 24 | 80 | 1.90 | 3600 | 45.0 | 0.23 | 38.0 | 89.0 | 1 |
| EE80252B1-000U-A99 | ⊕ | 24 | 73 | 1.80 | 3200 | 41.0 | 0.18 | 33.0 | 75.0 | 2 |
| EE80252B2-000U-999 | ⊕ | 24 | 64 | 1.50 | 2900 | 37.0 | 0.15 | 30.0 | 75.0 | 3 |
| EE80252B3-000U-999 | ⊕ | 24 | 50 | 1.20 | 2600 | 33.0 | 0.11 | 28.0 | 75.0 | 4 |
| EE80251S1-000U-A99 | ○ | 12 | 145 | 1.70 | 3200 | 41.0 | 0.18 | 33.0 | 75.0 | 2 |
| EE80251S2-000U-999 | ○ | 12 | 120 | 1.40 | 2900 | 37.0 | 0.15 | 30.0 | 75.0 | 3 |
| EE80251S3-000U-999 | ○ | 12 | 90 | 1.10 | 2600 | 33.0 | 0.11 | 28.0 | 75.0 | 4 |
| EE80252S1-000U-A99 | ○ | 24 | 73 | 1.80 | 3200 | 41.0 | 0.18 | 33.0 | 75.0 | 2 |
| EE80252S2-000U-999 | ○ | 24 | 64 | 1.50 | 2900 | 37.0 | 0.15 | 30.0 | 75.0 | 3 |
| EE80252S3-000U-999 | ○ | 24 | 52 | 1.30 | 2600 | 33.0 | 0.11 | 28.0 | 75.0 | 4 |

■ Air Flow-Static Pressure Characteristics



■ External dimensions(mm)



*All model could be customized. Please contact with Sunon Sales.

*Specifications are subject to change without notice. Please Visit SUNON website at <http://www.sunon.com> for update information.