

# M2V3 / C2V3

## Snap-action Microswitches

Standard Metal

### M2V3 / C2V3

Characteristics	<ul style="list-style-type: none"> <li>Sealed to IP65 (NEMA Type 13)</li> <li>Contains two electrically independent change-over switches</li> <li>Rotary action levers can be mounted in four different positions and then adjusted through 360°</li> <li>M20 or 1/2 inch NPS conduit entry options</li> </ul>
Rating	Up to 250 VAC, 10 A
Dimensions (mm)	66.9 × 38.3 × 30.2
Actuator	Spring plunger, roller levers, rod lever, wobble stick
Approvals	UL, CSA



### Preferred Range

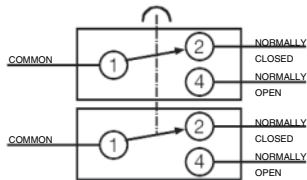
Ordering Reference	Actuating Force (N) (ozf)		Sealing	Operating pos. (mm) (in)		Terminal	Circuit	Actuator	Contacts	Electrical rating
M2V3HM6SUL	14.5	52.00	IP65	57.1	2.25	Screw/washer	2 CO	Spring plunger	Silver, AgCdO	Up to 250 VAC, 10 A
M2V3HM6SFUL	1.5	5.40	IP65			Screw/washer	2 CO	Wobble stick actuator	Silver, AgCdO	Up to 250 VAC, 10 A
C2V3HM6SUL	14.5	52.00	IP65	57.1	2.25	Screw/washer	2 CO	Spring plunger	Silver, AgCdO	Up to 250 VAC, 10 A
C2V3HM6SFUL	1.5	5.40	IP65			Screw/washer	2 CO	Wobble stick actuator	Silver, AgCdO	Up to 250 VAC, 10 A

Ordering Reference	Actuating Torque (Nm) (ozf-in)		Sealing	Terminal	Circuit	Actuator	Contacts	Electrical rating
M2V3HM6SAUL	0.23	32.00	IP65	Screw/washer	2 CO	Rotary action roller lever	Silver, AgCdO	Up to 250 VAC, 10 A
M2V3HM6SLRUL	0.23	32.00	IP65	Screw/washer	2 CO	Rotary action slotted roller lever	Silver, AgCdO	Up to 250 VAC, 10 A
M2V3HM6SRAUL	0.23	32.00	IP65	Screw/washer	2 CO	Rotary action rod lever	Silver, AgCdO	Up to 250 VAC, 10 A
C2V3HM6SAUL	0.23	32.00	IP65	Screw/washer	2 CO	Rotary action roller lever	Silver, AgCdO	Up to 250 VAC, 10 A
C2V3HM6SLRUL	0.23	32.00	IP65	Screw/washer	2 CO	Rotary action slotted roller lever	Silver, AgCdO	Up to 250 VAC, 10 A
C2V3HM6SRAUL	0.23	32.00	IP65	Screw/washer	2 CO	Rotary action rod lever	Silver, AgCdO	Up to 250 VAC, 10 A

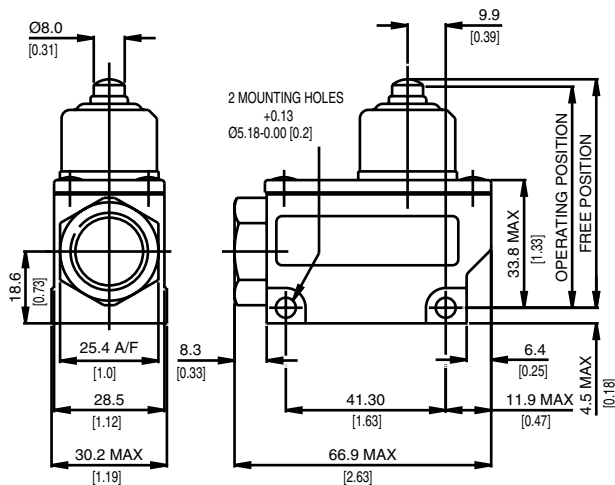
### Specifications

Housing	Aluminium
Plunger	Mild steel, zinc-plated
Mechanism	2 electrically isolated single pole microswitches
Functions	Change-over - independent circuits or double pole use
Contacts	Silver, silver cadmium oxide
Terminals	M3 screws and lockwashers
Temperature range °C	-10°C to +85°C
Mechanical life	10 <sup>6</sup> cycles minimum (impact free actuation)
Protection	IP 65 (enclosure) NEMA Type 13
Mounting	Side mounting
Actuators	Roller lever - nylon, slotted roller lever - mild steel zinc-plated, nylon Rod lever - stainless steel, wobble stick - spring steel wire

Circuit diagram



Dimensions



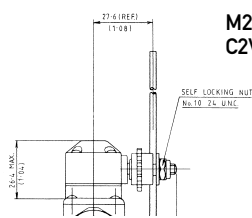
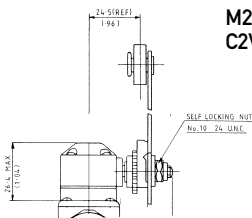
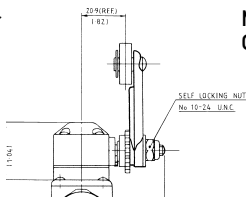
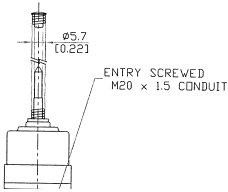
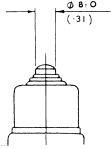
### Recommended maximum electrical ratings

Voltage (max)	Resistive load (A)	Inductive load	Horsepower	Approval
250 VAC	10 (0.75 pf)	10	-	UL 1054/CSA 22.2 No. 55 - 6,000 operations
125 VAC	-	-	½ HP (0.45 pf)	UL 1054/CSA 22.2 No. 55 - 6,000 operations
0 - 15 VDC	10	-	-	General rating - 50,000 operations
15 - 30 VDC	7	-	-	General rating - 50,000 operations

# M2V3 / C2V3

## Operating Characteristics

Actuator	Reference	Actuating Force Maximum		Release Force Minimum		Free Position Maximum		Operating Position		Movement Differential Maximum		Over travel Maximum	
		(N)	(ozf)	(N)	(ozf)	(mm)	(in)	(mm)	(in)	(mm)	(in)	(mm)	(in)
Spring plunger	M2V3HM6SUL C2V3HM6SUL	14,5	52,00	2,2	8,0	59,0	2,32	57,1 ±0,8	2,25 ±0,03	1,0	0,04	5,1	0,20
Wobble stick	M2V3HM6SFUL C2V3HM6SFUL	1,5	5,40	50 mm (1.97 in) movement to operate maximum									
Rotary roller lever	M2V3HM6SAUL C2V3HM6SAUL	0,23	32,0	Pre-travel 240									
Rotary slotted roller lever	M2V3HM6SLRUL C2V3HM6SLRUL	0,23	32,0	Adjustable 20° (min)									
Rotary rod lever	M2V3HM6SRAUL C2V3HM6SRAUL	0,23	32,0	Adjustable - pre-travel 240 maximum 20° (min)									



## M2V3 / C2V3

---

### Ordering Reference

Type	M2V3 / C2V3	
Conduit entry	M2V3HM6S	M20 /20MM ISO thread
	C2V3HM6S	½ in NPS thread
Actuators	No digit	Spring plunger
	A	Rotary action roller lever
	LR	Rotary action slotted roller lever
	RA	Rotary action rod lever
	F	Wobble stick actuator
Approvals	UL	UL and CSA

---