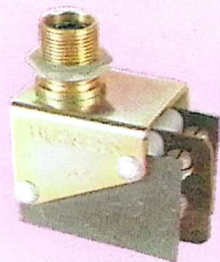


2V3T



Insert Micro Switches

Terminals Electrical Rating

Actuating Force (max) 7.8 N 28 ozf
Release Force (min) 2.2 N 8 ozf

Enclosure Mechanisms only: IP40
Exposed terminals

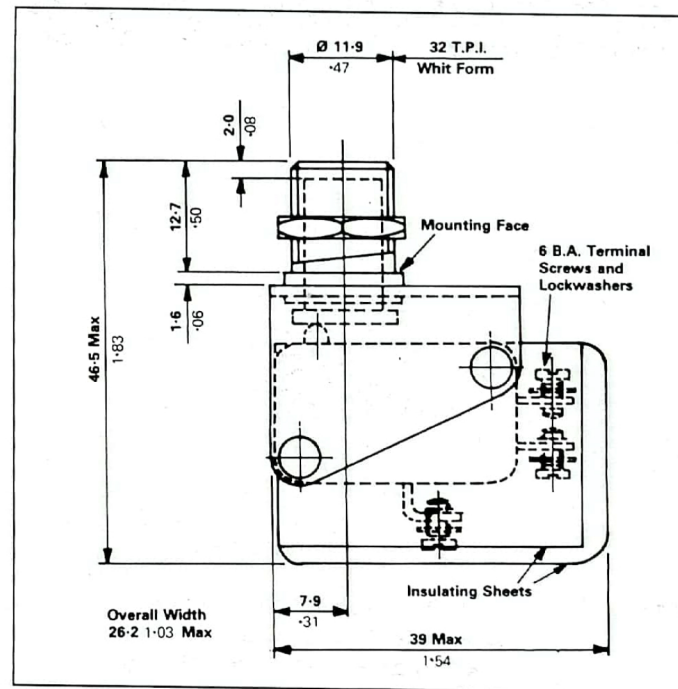
Temperature -10° to +85°C

Weight 44 g max

Approvals* CSA, SEV, UL

switching unit. Suitable buttons and bezels are listed on pages 185-186 and should be ordered separately

Two V3 switches listed on page 107, commonly actuated. They are electrically isolated and may be used either for double-pole switching or for the control of two separate single-pole circuits
Six screws with lockwashers
Recommended maximum 10A on 125 or 250 Vac.
Full ratings in Table 1 on page 67



Type Double-pole, momentary action, general purpose