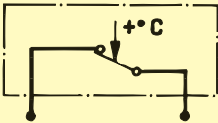
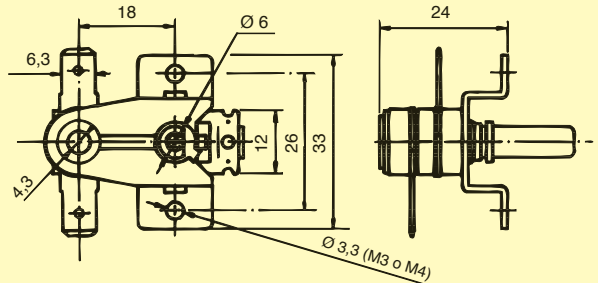
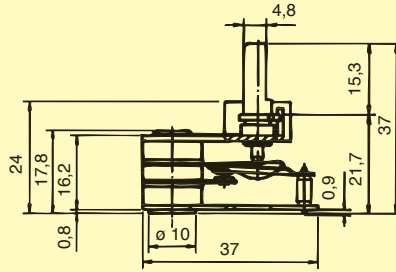


Ty23-E

Altezza perno in posizione minima
Height on minimum position
Hauteur dans la position minimale
Höhe in der kleinsten Stellung

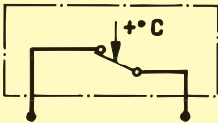


10A / 250V ~ T300

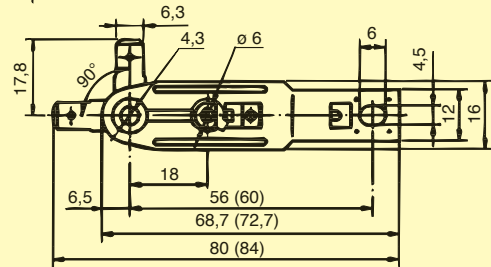
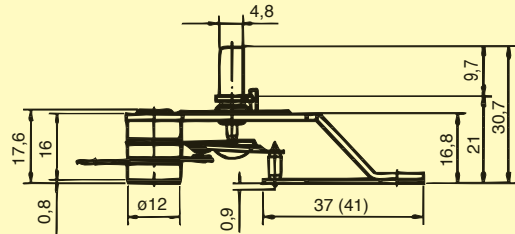


Ty23-P

Altezza perno in posizione minima
Height on minimum position
Hauteur dans la position minimale
Höhe in der kleinsten Stellung



10A / 250V ~ T300



Principali posizioni terminali Main terminal positions Position des cosse Anschlußmöglichkeiten



6,3x0,8 mm

45°



70°



4,8x0,8 mm

60°



6,3x0,8 mm

a serrare
spring-clip
a serrer
angezogen



4,8x0,8 mm

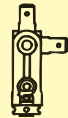


6,3x0,8 mm

a serrare
spring-clip
a serrer
angezogen



M 3,5



1

2

3

4

5

6

7

Altre posizioni a richiesta
Other positions upon request
Autres positions sur demande
Andere Stellungen auf Verlangen

In applicazione devono venire impiegati Faston femmina ricoperti con materiale isolante
On application female Faston covered with insulating external material must be used
In application doit être utilisé Faston femelle couvert avec matériel extérieur isolant
In Anwendung Weibchenfaston bedeckt mit äußere-isolierstoff Benutzen sein sollte