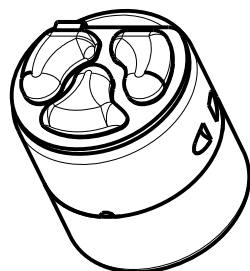
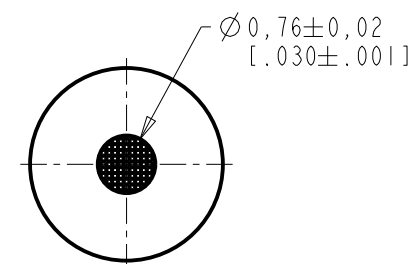
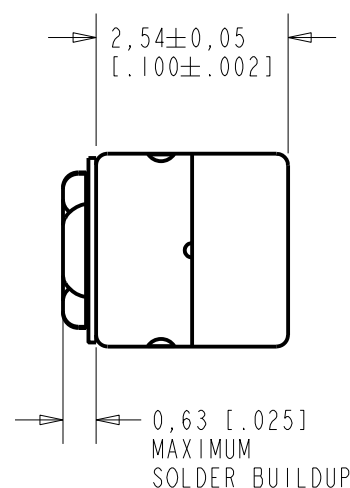
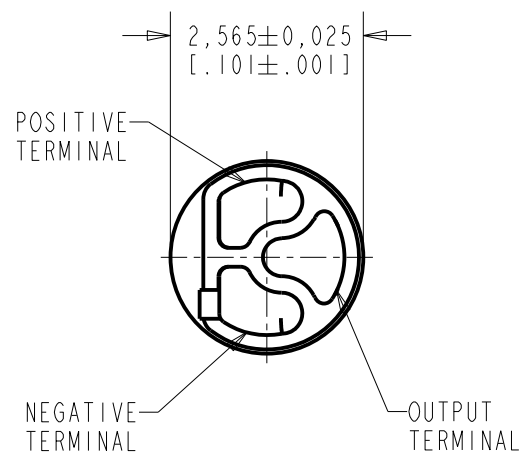


FG-23629-C36

SHT 1.1

NOTES:

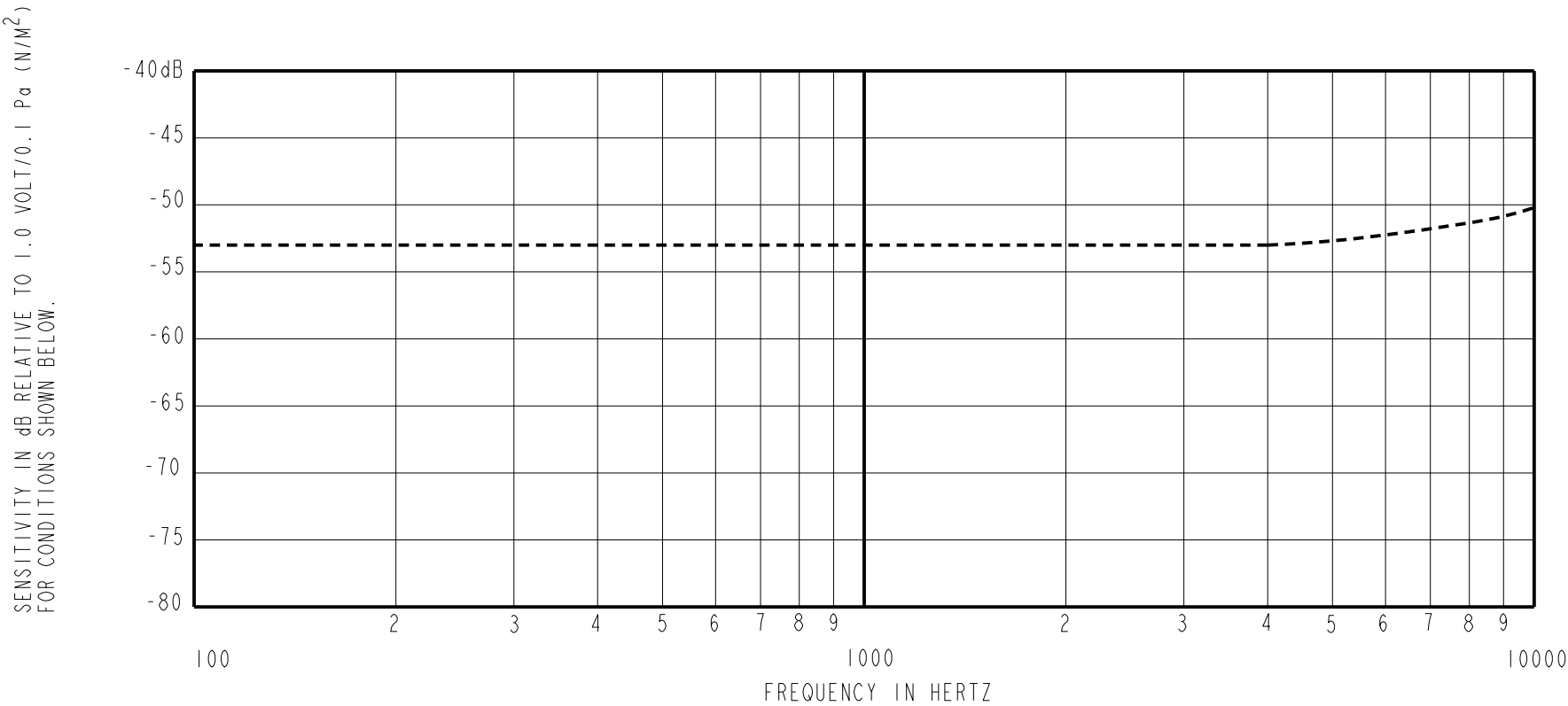
1. INCREASED PRESSURE AT THE SOUND INLET CAUSES A POSITIVE GOING VOLTAGE TO APPEAR AT THE OUTPUT TERMINAL, RELATIVE TO THE NEGATIVE TERMINAL.



DIMENSIONS IN MILLIMETERS [INCHES]

KNOWLES ELECTRONICS
ITASCA, ILLINOIS U.S.A.

| Revision | C.O. # | Implementation Date | RELEASE LEVEL | REVISION |
|----------------------|-----------|---------------------|---------------|--------------|
| | | | Active | G |
| G | MI0104555 | 4-12-12 | | |
| | | | | |
| SCALE: 10:1 | | | DR. BY DMS | DATE 9-15-05 |
| DO NOT SCALE DRAWING | | | CK. BY GJP | DATE 9-26-05 |
| TITLE: MICROPHONE | | FC-23629-C36 | APP. BY GJP | DATE 9-26-05 |
| OUTLINE DRAWING | | SHT 1.1 | | |



| FREQUENCY | SENSITIVITY | | | DEVICE CONFORMITY | |
|-----------|-------------|-------|-------|------------------------------|------|
| | MIN. | NOM. | MAX. | RANGE OF DEVIATION FROM 1KHz | |
| 100 | --- | -53.0 | --- | -3.0 | +3.0 |
| 1000 | -56.0 | -53.0 | -50.0 | 0.0 | 0.0 |
| 10000 | --- | -50.0 | --- | -0.0 | +6.0 |

- NOTES: 1. CASE CONNECTED TO NEGATIVE TERMINAL.
2. MICROPHONE TO BE FUNCTIONAL WITH 1.6 VDC SUPPLY.
3. TYPICAL SENSITIVITY TO HUMIDITY AT 1000Hz IS 0.06 dB/%RH
4. SENSITIVITY AND NOISE VALUES INDICATED ON THIS SPECIFICATION ARE VALID AT 50% HUMIDITY.

| PORT LOCATION | DC SUPPLY | AMPLIFIER CURRENT DRAIN | SENSITIVITY CHANGE ON REDUCING SUPPLY TO 0.9VDC | "A" WEIGHTED NOISE (1 kHz EQUIV. SPL) | OUTPUT IMPEDANCE OHMS | | |
|---------------|-----------|-------------------------|---|---------------------------------------|-----------------------|------|------|
| | | | | | MIN. | NOM. | MAX. |
| 12S | 1.3V | 50 μA MAX. | 3 dB MAX. | 28.0 dB MAX. | 2800 | 4400 | 6800 |

KNOWLES ELECTRONICS
ITASCA, ILLINOIS U.S.A.

| | | | | | | |
|--|-----------|---------------------|---------------|--------|----------|---------|
| Revision | C.O. # | Implementation Date | RELEASE LEVEL | | REVISION | |
| | | | Active | | G | |
| | | | | | | |
| G | MI0104555 | 4-12-12 | | | | |
| WHEN TEST LIMITS ARE USED TO ESTABLISH INCOMING INSPECTION ACCEPTANCE/REJECTION CRITERIA, CORRELATION OF TEST EQUIPMENT WITH KNOWLES IS ALSO REQUIRED FOR ELIMINATION OF EQUIPMENT AND TEST METHOD VARIATION | | | | DR. BY | DATE | |
| | | | | DMS | 9-15-05 | |
| TITLE: MICROPHONE | | | FC-23629-C36 | | CK. BY | DATE |
| | | | | | GJP | 9-26-05 |
| | | | | | APP. BY | DATE |
| PERFORMANCE SPECIFICATION | | | SHT 2.1 | | GJP | 9-26-05 |