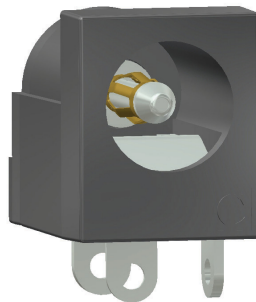


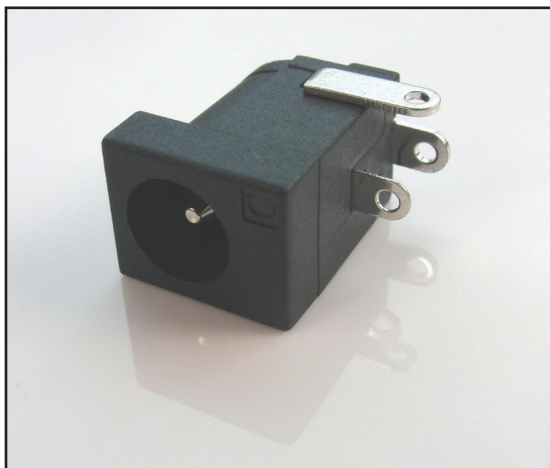
# CLIFF

## DC10L DUAL DC SOCKET Accepts 2.1mm & 2.5mm Plugs

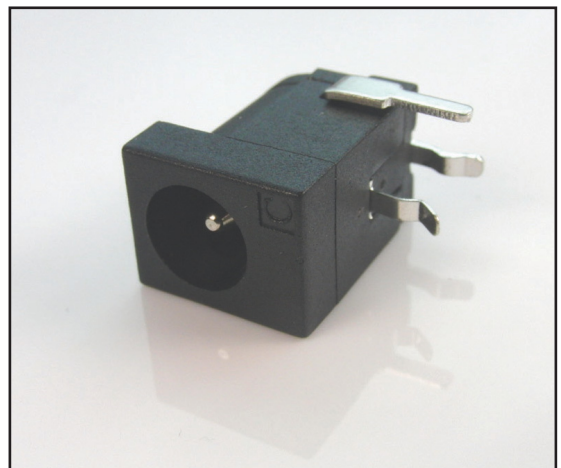
Unique patented design ensures superior contact for  
both 2.1mm & 2.5mm plugs



- Rated 5 Amps at 12 Volts.
- Body material is PBT for superior temperature characteristics.
- Contacts are Copper alloy / Tin plated.
- Available in 90° PCB mounting or Solder tag / Chassis mounting.
- RoHS compliant.
- UK Patent No: 2447648, USA Patent No: 7648380



**FCR681465**  
DC10L Solder Tag



**FCR681465P**  
DC10LP 90° PCB Mounting

For further information, contact: [sales@cliffuk.co.uk](mailto:sales@cliffuk.co.uk)