

LINEAR INTEGRATED CIRCUIT

VOLTAGE REGULATOR

- OUTPUT CURRENT \cong 100 mA
- TIGHT TOLERANCE for OUTPUT VOLTAGE
- LOAD REGULATION \leq 1%
- RIPPLE REJECTION 54 dB TYPICAL
- OVERLOAD and SHORT CIRCUIT PROTECTION

The TBA 625B is an integrated monolithic 12 V voltage regulator in TO-39 metal case which can supply more than 100 mA. The device features high temperature stability, internal overload and short circuit protection, low output impedance and excellent transient response. The TBA 625B is intended for use as voltage supply for digital circuits with high noise immunity, linear integrated circuits and for any other industrial applications.

ABSOLUTE MAXIMUM RATINGS

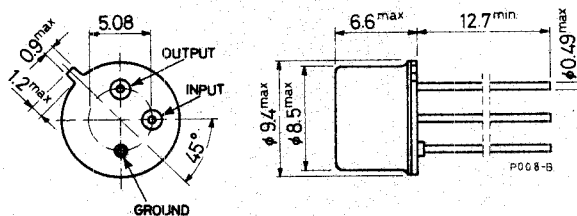
V_i	Input voltage	27	V
P_{tot}	Power dissipation at $T_{amb} = 25^\circ\text{C}$	0.75	W
	at $T_{case} = 25^\circ\text{C}$	4	W
T_{stg}	Storage temperature	-55 to 150	$^\circ\text{C}$
T_j	Junction temperature	175	$^\circ\text{C}$
T_{op}	Operating temperature	0 to 70	$^\circ\text{C}$

ORDERING NUMBER: TBA 625B X5

MECHANICAL DATA

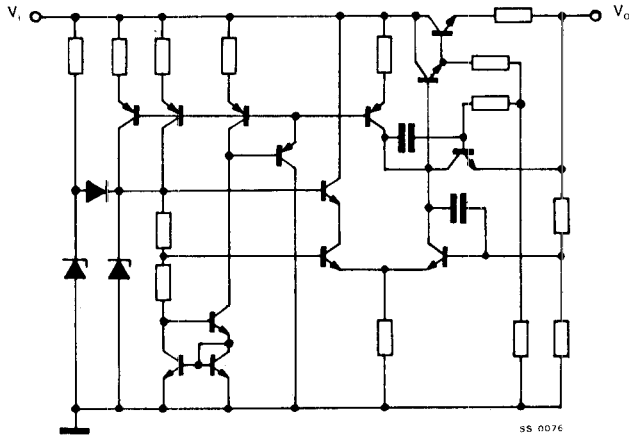
Dimensions in mm

Ground connected to case



TBA 625B

SCHEMATIC DIAGRAM



THERMAL DATA

$R_{th\ j-case}$	Thermal resistance junction-case	max	37.5	°C/W
$R_{th\ j-amb}$	Thermal resistance junction-ambient	max	200	°C/W

ELECTRICAL CHARACTERISTICS $(T_j = 25\text{ °C unless otherwise specified})$

Parameter	Test conditions	Min.	Typ.	Max.	Unit
V_o Output voltage	$V_i = 15\text{ V to }27\text{ V}$ $I_o = 5\text{ mA}$ $C_L = 10\ \mu\text{F}$	11.4	12	12.6	V
$\frac{\Delta V_o}{V_o}$ Load regulation coefficient	$V_i = 15\text{ V to }27\text{ V}$ $I_o = 5\text{ mA to }100\text{ mA}$ $C_L = 10\ \mu\text{F}$		0.3	1	%
I_o Regulated current	$V_i = 12\text{ V}$ $\frac{\Delta V_o}{V_o} \leq 1\%$	100	140		mA

ELECTRICAL CHARACTERISTICS (continued)

Parameter		Test conditions	Min.	Typ.	Max.	Unit
I_o	Max. regulated current	$V_i = 21 \text{ V}$	120	150	200	mA
R_o	Output resistance	$V_i = 21 \text{ V}$ $I_o = 5 \text{ mA to } 100 \text{ mA}$		0.1		Ω
$\frac{\Delta V_o}{V_o}$	Line regulation coefficient	$V_i = 15 \text{ V to } 27 \text{ V}$ $I_o = 5 \text{ mA}$ $C_L = 10 \mu\text{F}$		0.2	0.5	%
SVR	Supply voltage rejection	$V_i = 17 \text{ V}$ $\Delta V_i = 4 \text{ V}_{pp}$ $I_o = 5 \text{ mA}$ $C_L = 10 \mu\text{F}$ $f = 100 \text{ Hz}$		46	54	dB
e_N	Output noise voltage	$V_i = 21 \text{ V}$ $I_o = 5 \text{ mA}$ $C_L = 10 \mu\text{F}$ $B = 10 \text{ Hz to } 100 \text{ kHz}$		150		μV
I_d	Quiescent drain current	$V_i = 27 \text{ V}$ $I_o = 0$	6	10	18	mA
$\frac{\Delta V_o}{\Delta T_{amb}}$	Voltage/temperature coefficient	$V_i = 21 \text{ V}$ $I_o = 5 \text{ mA}$ $C_L = 10 \mu\text{F}$ $T_{amb} = 0 \text{ to } 70 \text{ }^\circ\text{C}$		0.85		mV/ $^\circ\text{C}$
I_{sc}	Output short circuit current	$V_i = 27 \text{ V}$ $V_o = 0$		35	55	mA

TBA 625B

Fig. 1 - Typical output voltage vs output current

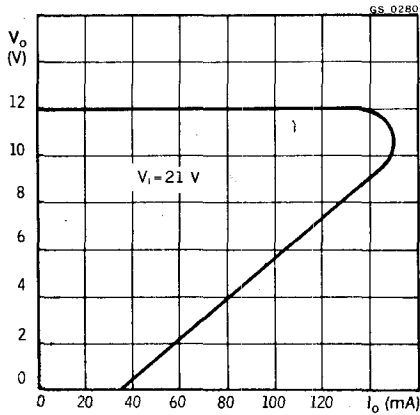


Fig. 2 - Power rating chart

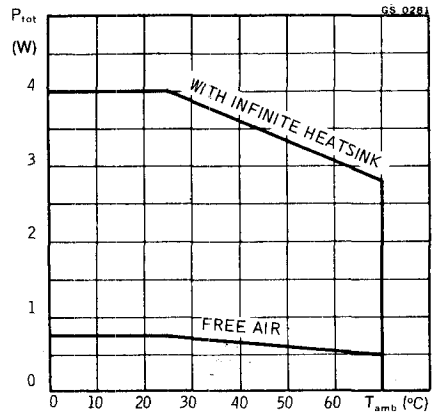


Fig. 3 - Maximum output current vs junction temperature

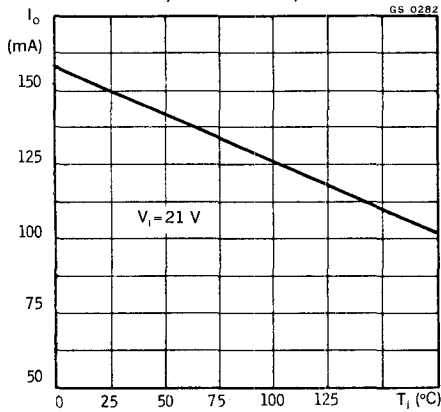
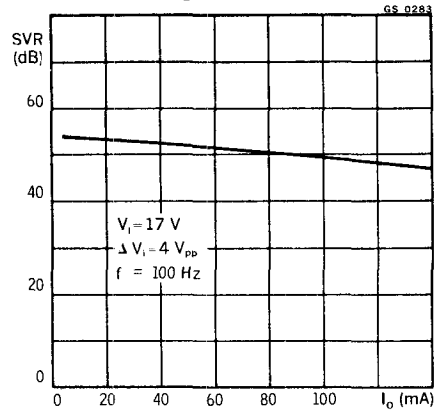


Fig. 4 - Typical ripple rejection vs regulated output current



TBA 625B

Fig. 5 - Typical ripple rejection vs frequency

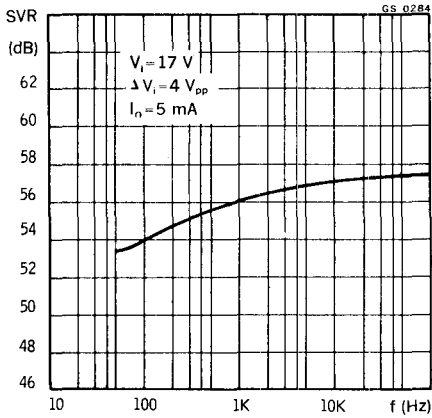


Fig. 6 - Maximum output current vs input voltage

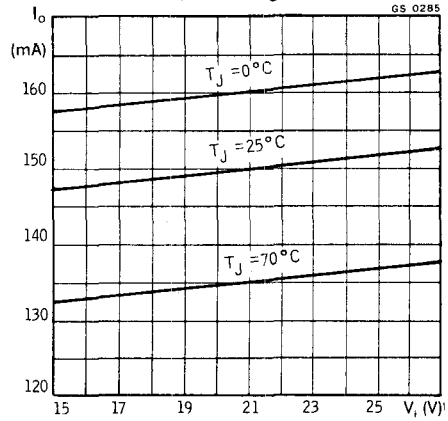


Fig. 7 - Typical short circuit output current vs input voltage

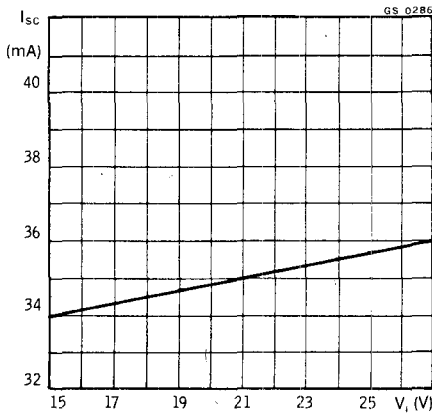
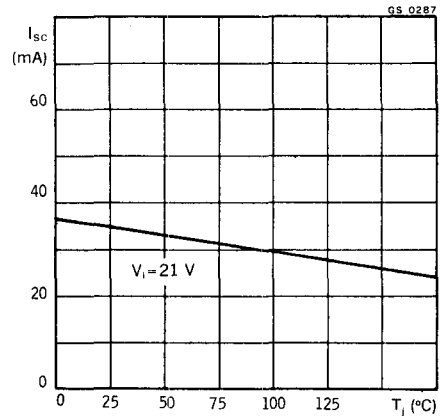


Fig. 8 - Typical short circuit output current vs junction temperature



TBA 625B

Fig. 9 - Typical dropout voltage vs output current

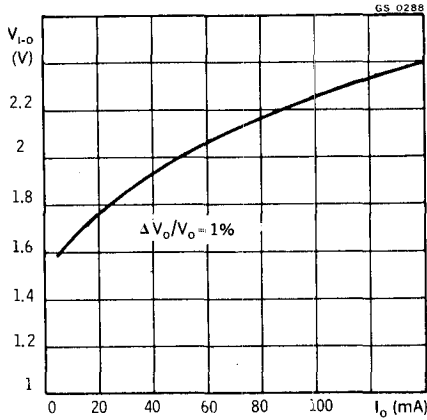


Fig. 10 - Typical quiescent drain current vs junction temperature

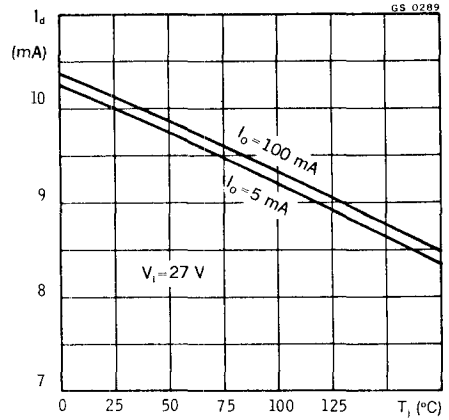


Fig. 11 - Typical quiescent drain current vs input voltage

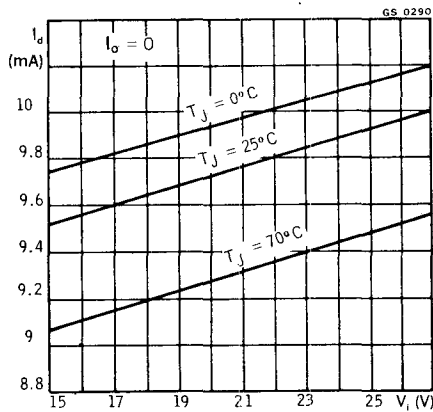
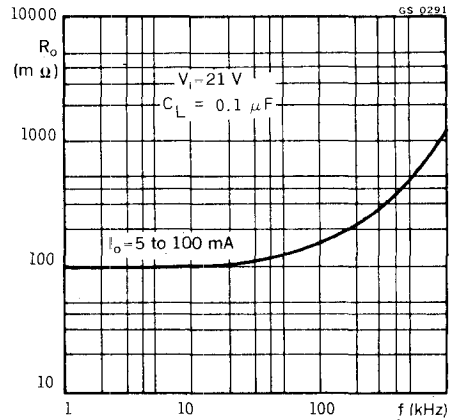
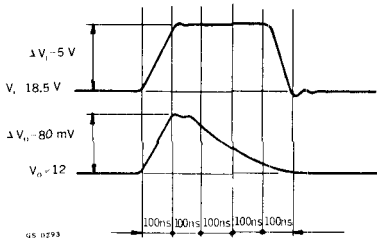


Fig. 12 - Typical output resistance vs frequency

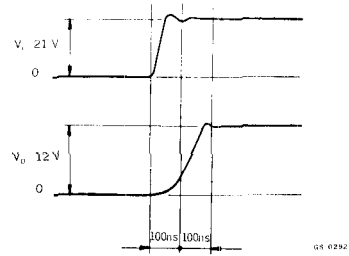


TBA 625B

Line transient response
($I_o = 5 \text{ mA}$)



Turn-on time
($I_o = 100 \text{ mA}$)



TYPICAL APPLICATIONS

Fig. 13 - Positive output voltage regulator

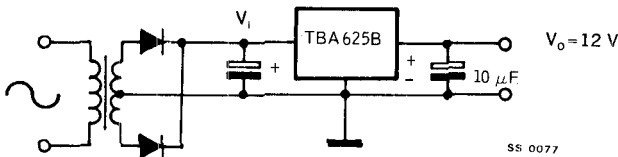
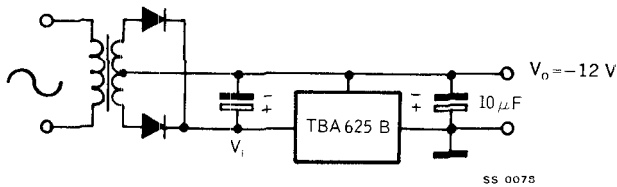
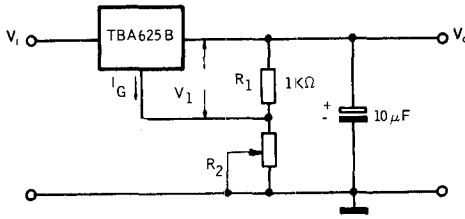


Fig. 14 - Negative output voltage regulator



TBA 625B

Fig. 15 - Adjustable output voltage regulator



$$V_o = V_1 \left(1 + \frac{R_2}{R_1}\right) + I_G R_2$$

$V_1 = 24 \text{ V}$
 $V_o = 12 \text{ to } 15 \text{ V}$
 $I_G > 80 \text{ mA}$
 $R_1 \approx 100 \text{ m}\Omega$
 $R_2 = \text{potentiometer } 0 \text{ to } 150 \Omega$

SS 0079

Typical adjustable output voltage vs output current

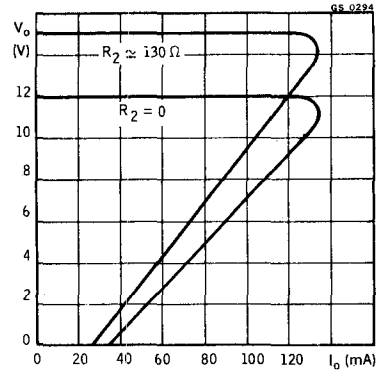
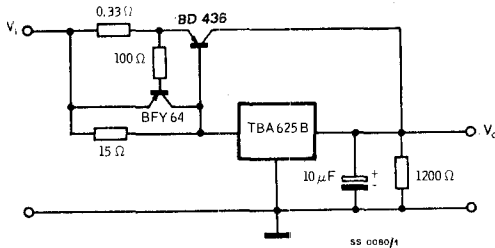


Fig. 16 - PNP current boost circuit



$V_i = 21 \text{ V}$
 $V_o = 12 \text{ V}$
 $I_o = 2 \text{ A}$
 $R_o \approx 20 \text{ m}\Omega$

SS 0080/1

Typical output voltage vs output current

