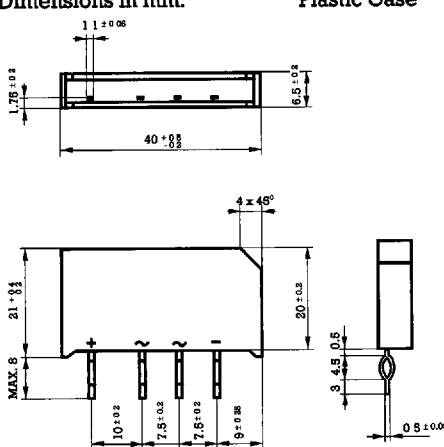


5 Amp. Silicon Bridge Rectifiers in Plastic Case

<p>Dimensions in mm.</p> <p>Plastic Case</p> 	<p>Voltage 100 to 1.000 V.</p> <p>Current 5.0 A.</p> <ul style="list-style-type: none"> • In process of evaluation UL 1449 • Low Cost • Case: Epoxy encapsulation • Terminals: Radial in-line • Ideal for P.C.B. <p>Lead and polarity identifications High surge current capability</p>
--	--

Maximum Ratings, according to IEC publication No. 134

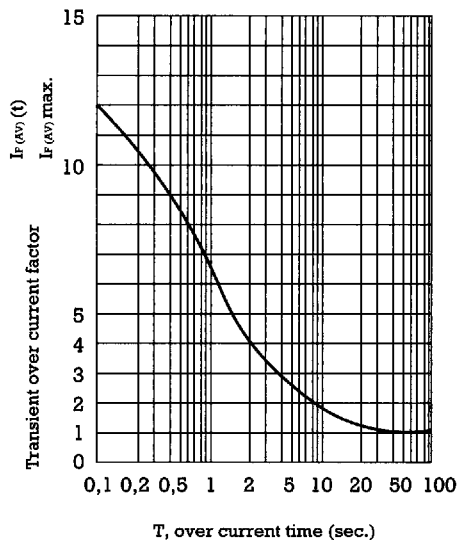
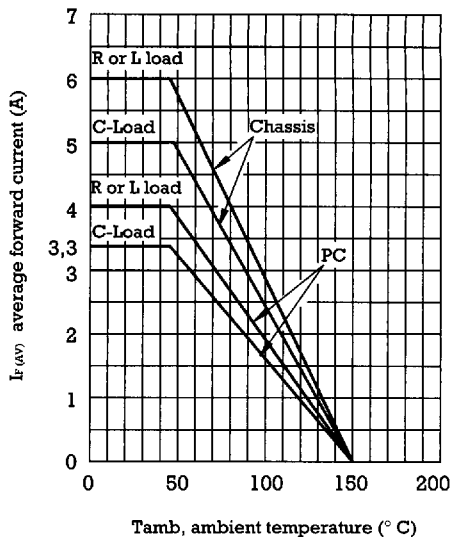
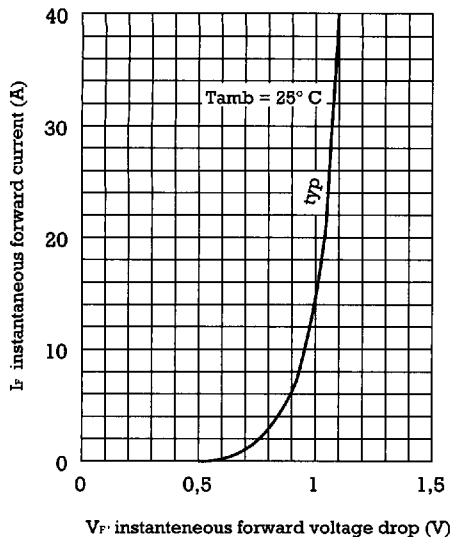
		B40	B80	B125	B250	B380	B500
		C5000/3300	C5000/3300	C5000/3300	C5000/3300	C5000/3300	C5000/3300
V_{RRM}	Peak recurrent reverse voltage (V)	100	200	300	600	900	1000
V_N	Recommended input voltage (V_{RMS})	40	80	125	250	380	500
$I_{F(AV)}$	Forward current at $T_{amb} = 45^\circ C$ - PC mounted R load C load - Chassis mounted R load C load	4.0 A 3.3 A 6.0 A 5.0 A					
I_{FRM}	Recurrent peak forward current	30 A					
I_{FSM}	10 ms. peak forward surge current	250 A					
I^2t	I^2t value for fusing ($t = 10$ ms)	300 A ² s					
T_j	Max. operating temperature	+ 150°C					
T_{stg}	Storage temperature range	- 40 to + 150 °C					

Electrical Characteristics at $T_{amb} = 25^\circ C$

V_F	Max. forward voltage drop per arm at $I_F = 5$ A	1 V
I_R	Max. reverse current per arm at V_{RRM}	20 μ A

FAGOR ELECTRONICS

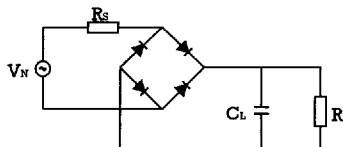
Characteristic Curves



OPERATION WITH CAPACITIVE LOAD

Limit values of R_s and C_L for adequate protection against switching transients.

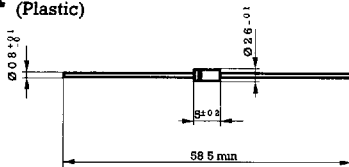
Recommended input voltage V_{RMS}	Min. R_s Tol $\pm 10\%$ Ohms	Max. C_L + 50 % Tol - 20 % μF
40	0,5	10.000
80	1,0	5.000
125	1,5	2.500
250	3,0	1.200
380	5,0	800
500	6,0	600



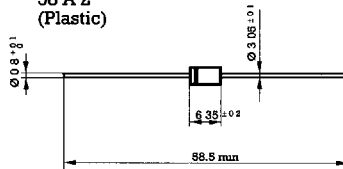
Package Outlines

Dimensions in mm.

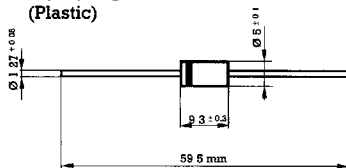
1 DO-41 (Plastic)



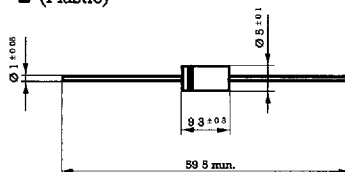
2 DO-15 F-126 58 A 2 (Plastic)



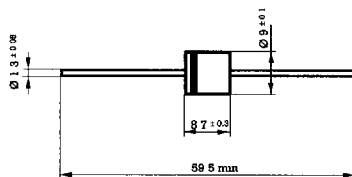
3 DO-27 A DO-201 AD (Plastic)



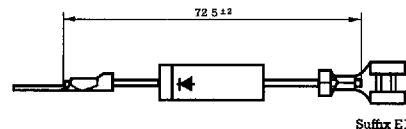
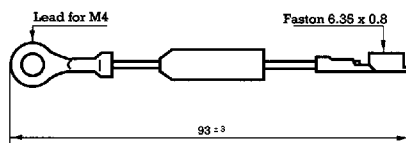
4 DO-201 AE (Plastic)



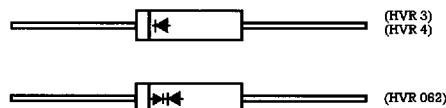
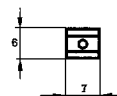
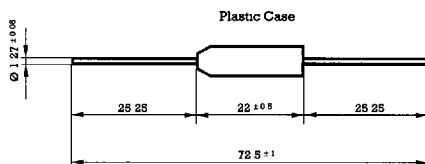
5 P-6 (Plastic)



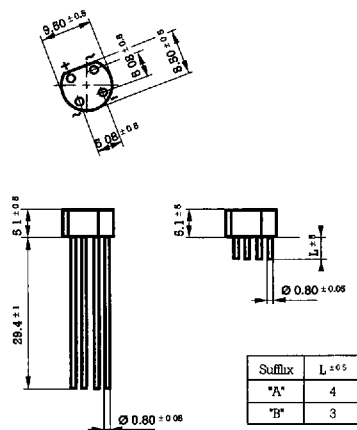
7



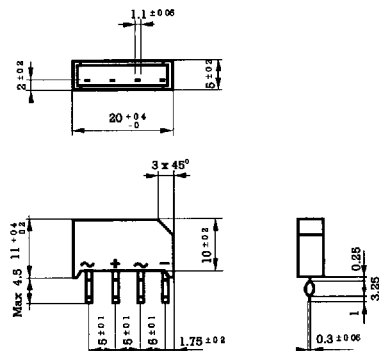
6



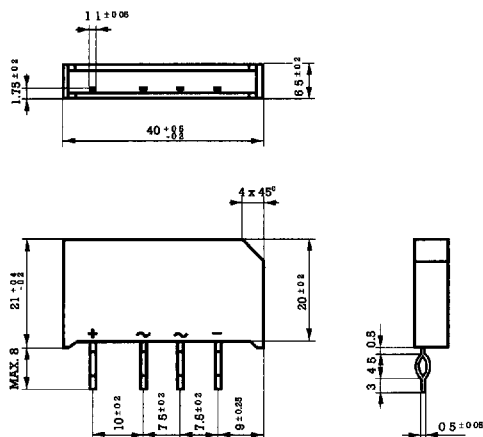
8



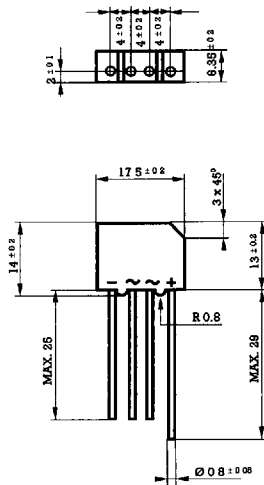
9



10



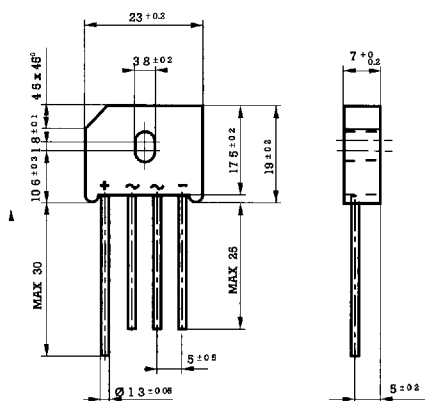
11



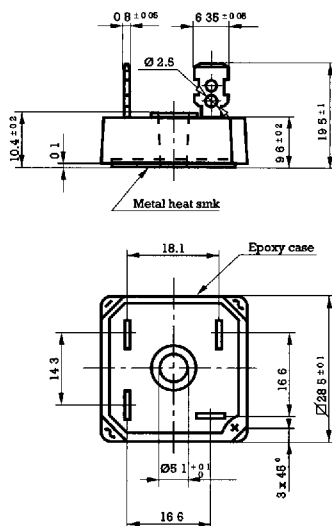
Package Outlines

Dimensions in mm.

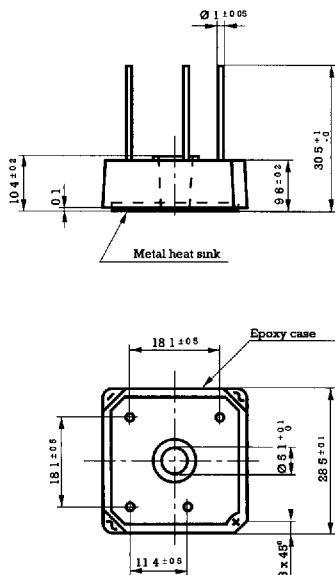
12



13

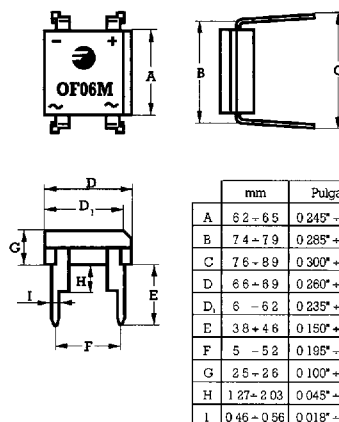


14



15

DF - M



	mm	Pulgadas
A	6.2 - 6.5	0.245" - 0.255"
B	7.4 - 7.9	0.285" - 0.315"
C	7.6 - 8.9	0.300" - 0.350"
D	6.6 - 8.9	0.260" - 0.270"
D ₁	6 - 6.2	0.235" - 0.245"
E	3.8 - 4.6	0.150" - 0.180"
F	5 - 5.2	0.195" - 0.205"
G	2.5 - 2.6	0.100" - 0.102"
H	1.27 - 2.03	0.045" - 0.080"
I	0.46 - 0.56	0.018" - 0.022"

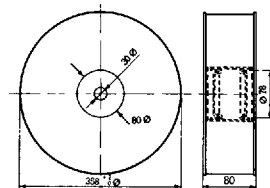
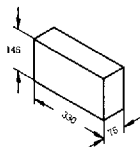
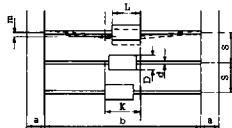
Packaging specifications

Dimensions in mm

REEL PACKAGING (Under IEC-CEI 286-1 and RS-296 D)

CASE TYPE (OUTLINE)	REEL DIMENSIONS					UNITS PER REEL	APROX GROSS WEIGHT PER REEL PACKED
	K	b	S	m	a		
(1) DO41 (Plastic)	6 4	53 ±2	5 ±0.5	1 2	6 ±1	6000	2.5 kg (5.52 Lbs)
(2) DO15 (Plastic)	7 85	53 ±2	5 ±0.5	1 2	6 ±1	5000	2.3 kg (5.07 Lbs)
(3) DO201AD (Plastic) (4) DO201AE (Plastic)	11	53 ±2	10 ±0.5	1.2	6 ±1	1500	2 kg (4.41 Lbs)
(5) P-6 (Plastic)	11 27	53 ±2	10 ±0.5	1.2	6 ±1	1000	3 kg (6.61 Lbs)

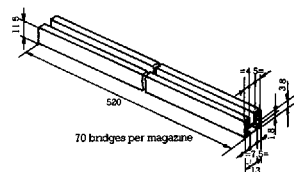
REEL PACKAGING



AMMO BOX PACKAGING (SUFFIX 'AMP')

OUTLINES	BOX SIZE	UNITS PER BOX	APROX GROSS WEIGHT PER REEL PACKED
DO-41 (Plastic)	330 x 75 x 145	6000	2.20 kg (4.85 Lbs)
DO-15 (Plastic)	330 x 75 x 145	5000	2.20 kg (4.85 Lbs)
DO-201AD (Plastic)	330 x 75 x 145	1500	1.85 kg (4.08 Lbs)
DO-201ED (Plastic)	330 x 75 x 145	1500	1.85 kg (4.08 Lbs)
P-600	330 x 75 x 145	500	1.2 kg (2.65 Lbs)

DIL PACKAGING
ANTISTATIC PLASTIC TUB



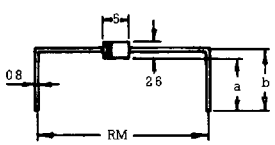
BOX PACKAGING

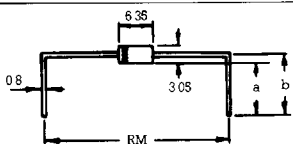
DEVICE TYPE (OUTLINE)	BOX SIZE	UNITS PER BOX	APROX GROSS WEIGHT
(6) (7) HVR3, HVR4 HVR062 (T) = Suffix E1	70 x 105 x 205	(6) 250 (7) 200	0.710 kg (1.560 Lbs)
(8) B C800, C1000, C1500 R, WL F, WF / ("A")	70 x 105 x 205	500 / (1.500)	0.650 kg (1.430 Lbs)
(9) B C1500/1000, C2000/1500	70 x 105 x 205	500	1.100 kg (2.425 Lbs)
(10) B . C3700/2200	70 x 105 x 205	100	1.100 kg (2.425 Lbs)
(10) B . C500/3300, C5000/3300-400	70 x 105 x 205	100	1.100 kg (2.425 Lbs)
(11) FBP, 2FBP	215 x 85 x 335	500	2.10 kg (4.62 Lbs)
(12) FBU 4 - 6 - 8	270 x 90 x 400	500	4.20 kg (9.23 Lbs)
(13) FB 10 - 15 - 25 - 35 - 50 B 10 - 15 - 25 - 35 - 50	70 x 105 x 205	50	0.850 kg (1.872 Lbs)
(14) FB 10L - 15L - 25L B 10L - 15L - 25L	35 x 135 x 205	20	0.350 kg (0.770 Lbs)
DF - M	540 x 145 x 110	5 600	4.0 kg (8.82 Lbs.)

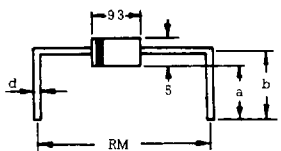
Standard lead forming specifications

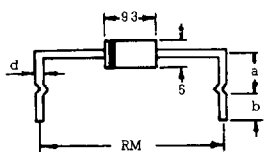
Dimensions in mm.

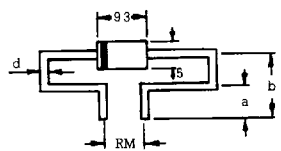
Plastic Cases

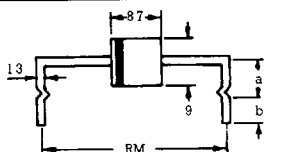
DO-41		Type	Dimensions		
			a	b	RM
		C2-3	3 ± 0.5	43 ± 0.5	10 ± 0.5
		C2-5	10 ± 0.5	113 ± 0.5	10 ± 0.5
		C2-8	4 ± 0.5	53 ± 0.5	10 ± 0.5

DO-15		Type	Dimensions		
			a	b	RM
		C2-3	3 ± 0.5	45 ± 0.5	10 ± 0.5
		C2-5	10 ± 0.5	115 ± 0.5	10 ± 0.5
		C2-8	4 ± 0.5	55 ± 0.5	10 ± 0.5

DO-201AD DO-27A (d = 1.27)		DO-201AE (d = 1)	Type	Dimensions		
				a	b	RM
			C2-1	35 ± 0.5	6 ± 0.5	15 ± 0.5
			C2-2	4 ± 0.5	65 ± 0.5	15 ± 0.5
			C2-4	75 ± 0.3	10 ± 0.3	178 ± 0.15
			C2-6	35 ± 0.5	6 ± 0.5	175 ± 0.5
			C2-7	45 ± 0.5	7 ± 0.5	21 ± 0.5
			C2-11	45 ± 0.5	7 ± 0.5	175 ± 0.5
			C2-12	125 ± 0.5	15 ± 0.5	175 ± 0.5
			C2-13	16 ± 0.5	185 ± 0.5	152 ± 0.5
			C2-14	75 ± 0.5	10 ± 0.5	15 ± 0.5
			C2-17	4 ± 0.5	85 ± 0.5	20 ± 0.5

DO-201AD DO-27A (d = 1.27)		DO-201AE (d = 1)	Type	Dimensions		
				a	b	RM
			C6-1	10 ± 0.5	5 ± 0.5	152 ± 0.5
			C6-2	10 ± 0.5	5 ± 0.5	175 ± 0.5
			C6-3	7 ± 0.5	5 ± 0.5	21 ± 0.5
			C6-4	135 ± 0.5	5 ± 0.5	152 ± 0.5
			C6-5	10 ± 0.5	5 ± 0.5	20 ± 0.5

DO-201AD DO-27A (d = 1.27)		DO-201AE (d = 1)	Type	Dimensions		
				a	b	RM
			C4-2	45 ± 0.3	10.5 ± 0.3	75 ± 0.5

P-6		Type	Dimensions		
			a	b	RM
		C6-1	10 ± 0.5	5 ± 0.5	152 ± 0.5
		C6-2	10 ± 0.5	5 ± 0.5	175 ± 0.5
		C6-3	7 ± 0.5	5 ± 0.5	21 ± 0.5
		C6-4	135 ± 0.5	5 ± 0.5	152 ± 0.5